

LH-RAKO IKERKETA ETA BERRIKUNTZA APLIKATURAKO ZENTROA  
CENTRO DE INVESTIGACIÓN E INNOVACIÓN APLICADA PARA LA FP  
CENTRE FOR RESEARCH AND APPLIED INNOVATION IN VET



**Fp**  
**EUSKADI**  
LANBIDE HEZIKETA

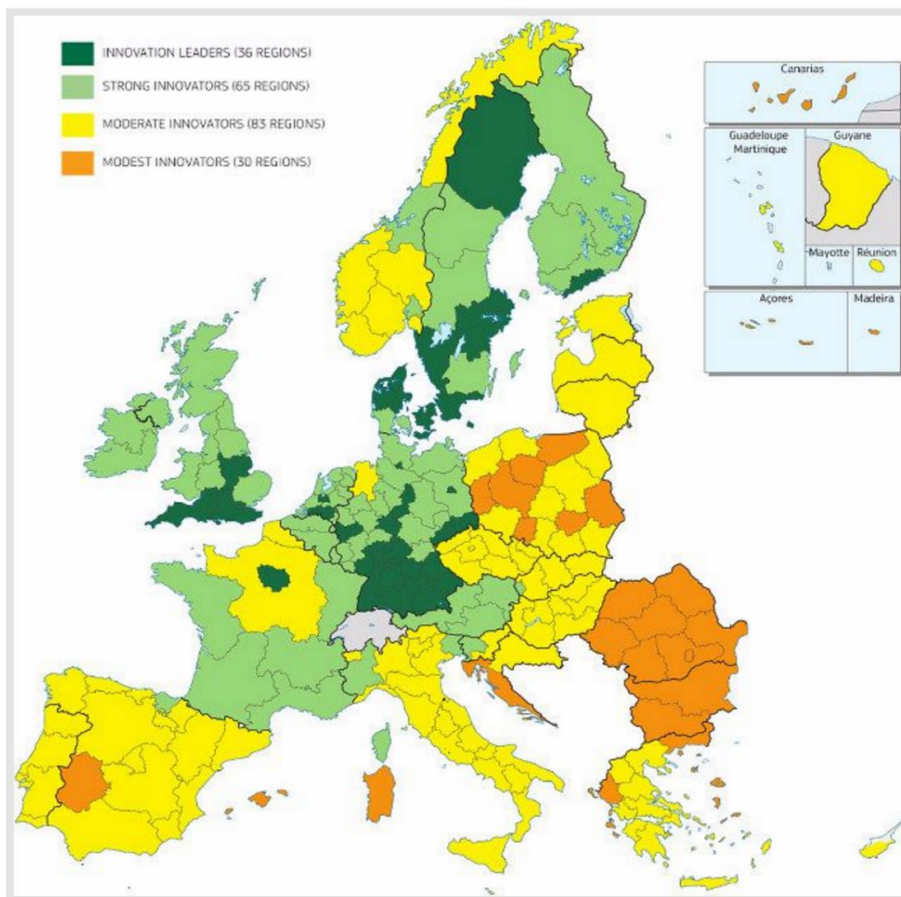
## Autonomous Community

# BASQUE COUNTRY

Inhabitants	2.164.311
Surface	7.234 Km <sup>2</sup>
Density	299,19 Hab/km <sup>2</sup>



## INNOVATION IN THE BASQUE COUNTRY 2016



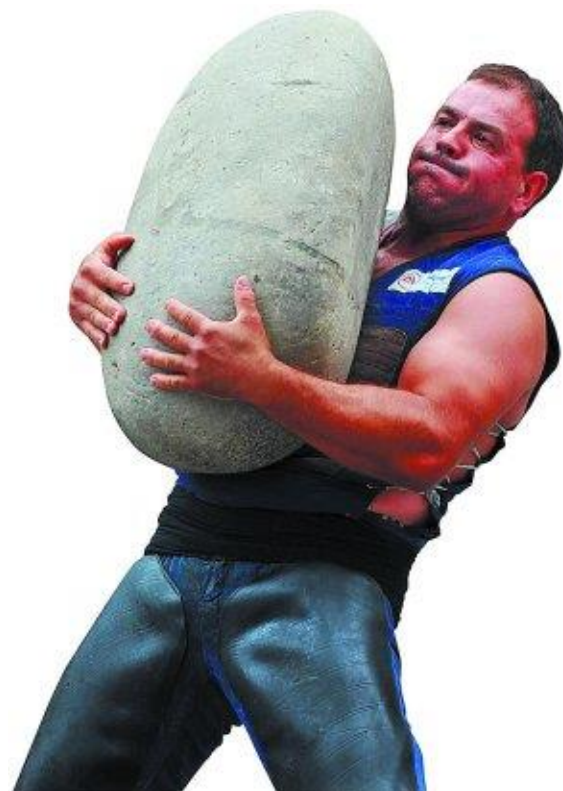
The **Regional Innovation Scoreboard** is a regional extension of the European Innovation Scoreboard, assessing the innovation performance of European regions on a limited number of indicators. The RIS 2016 covers 214 regions across 22 EU countries.

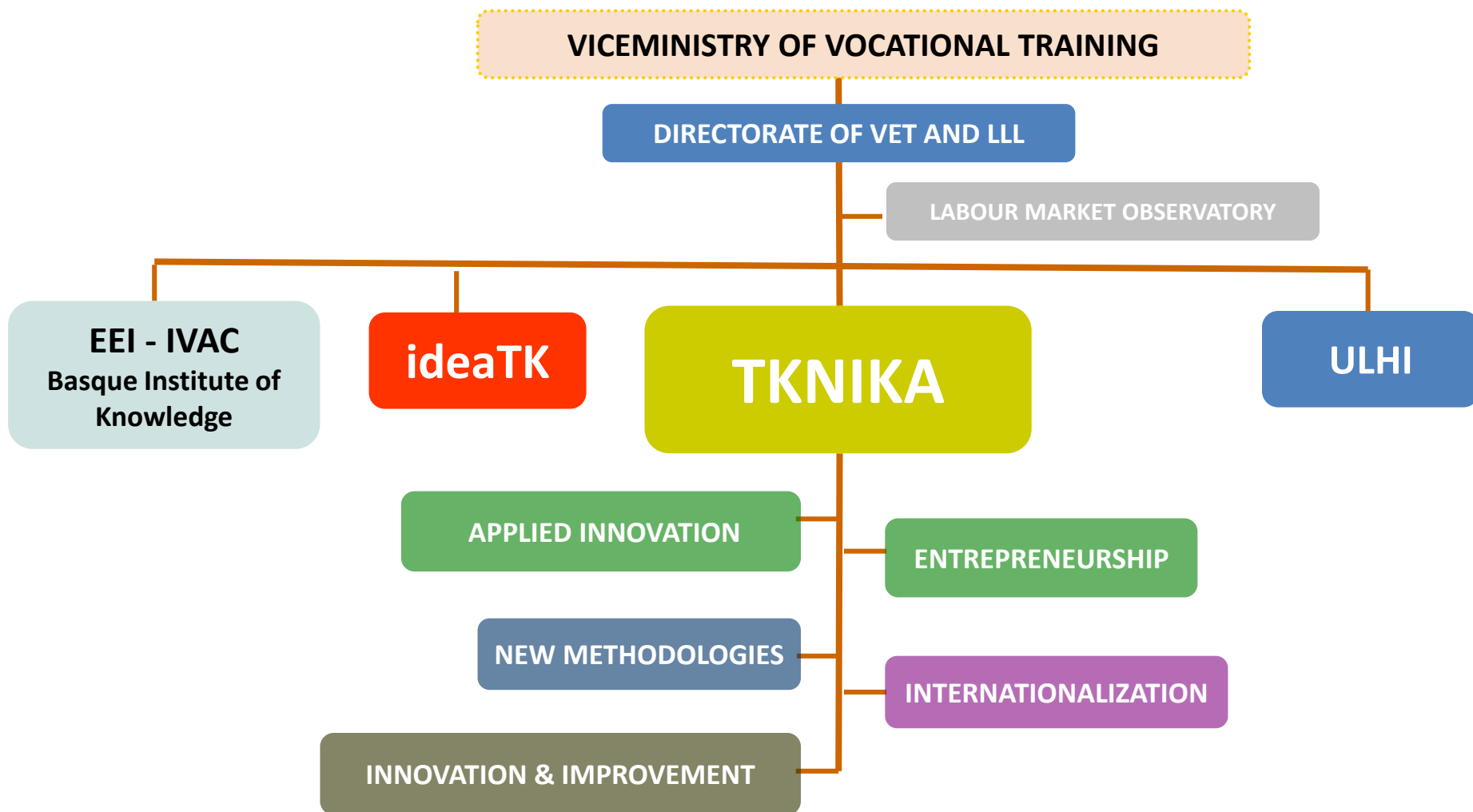
### Euskadi, a strong innovator:

- Percentage of population aged 30 to 34 with completed **higher education**.
- Percentage of innovative SMEs **collaborating** with other SMEs.
- Percentage of employment in industries of high and medium-high technology and **knowledge-intensive** services.

Autonomous Community

# BASQUE COUNTRY





# WHY ETHAZI?



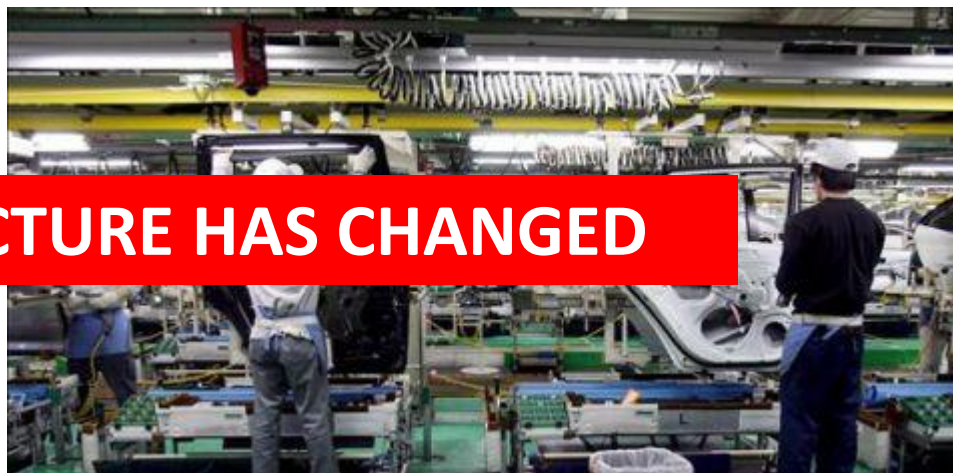


**BASQUE  
INDUSTRY 4.0**

LANTEGI ADIMENDUA  
LA FÁBRICA INTELIGENTE



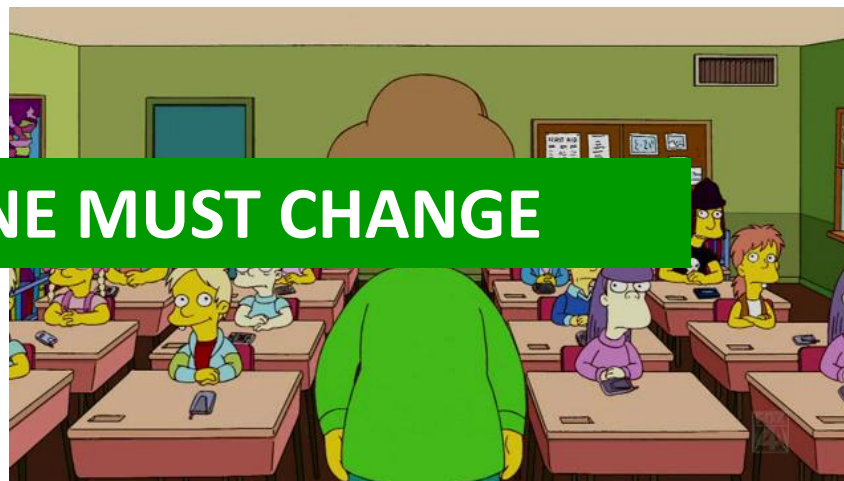
**THIS PICTURE HAS CHANGED**



**Fp**

**EUSKADI**  
LANBIDE HEZIKETA

**THIS ONE MUST CHANGE**



# AIM

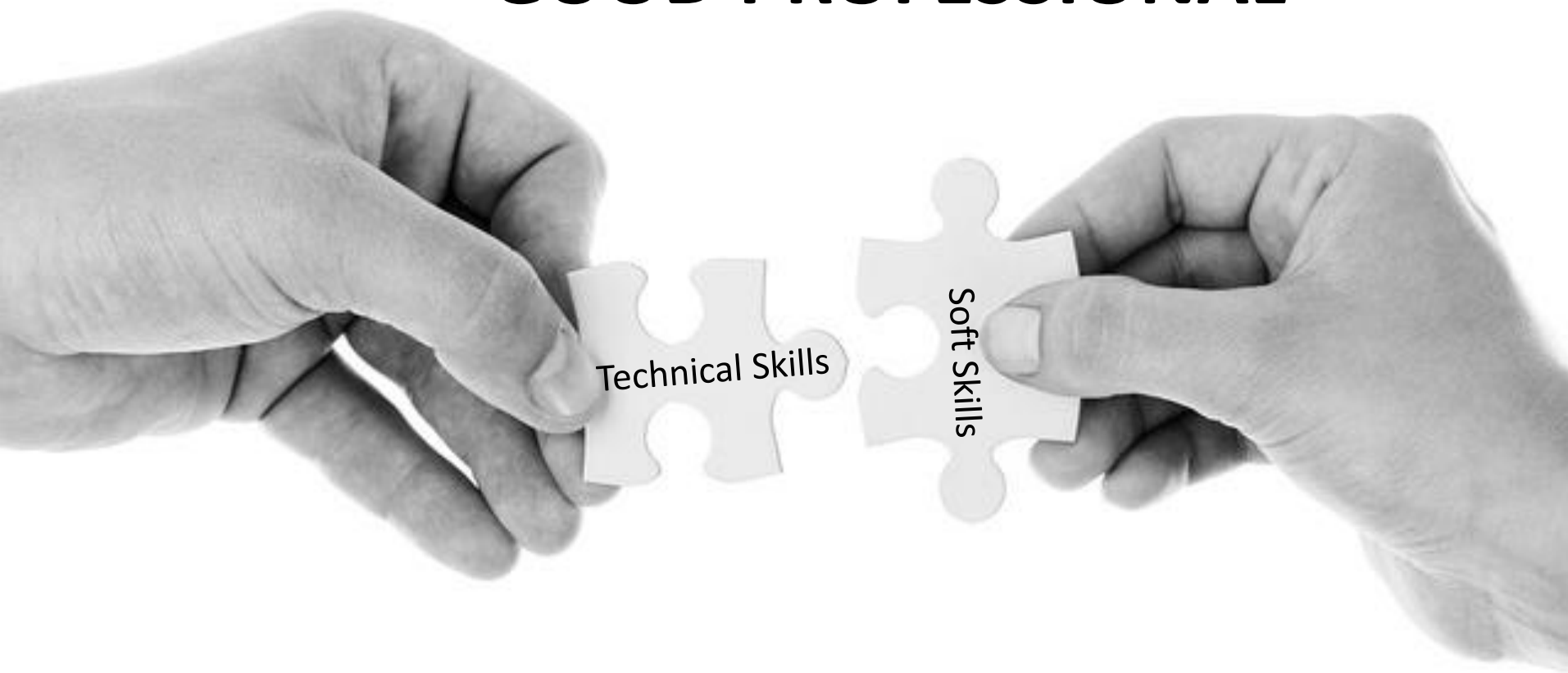


IMPROVE THE  
 PROFESSIONAL  
 COMPETENCE OF VET  
 STUDENTS





# GOOD PROFESSIONAL

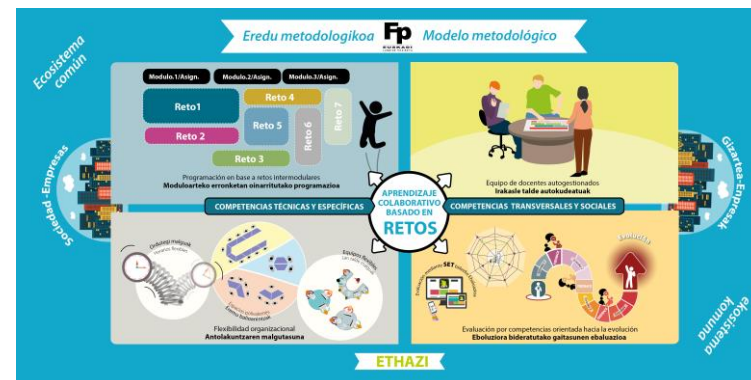


# OUR WORKING PATH



Transform  
training

## ETHAZI (High Performance Cicles)

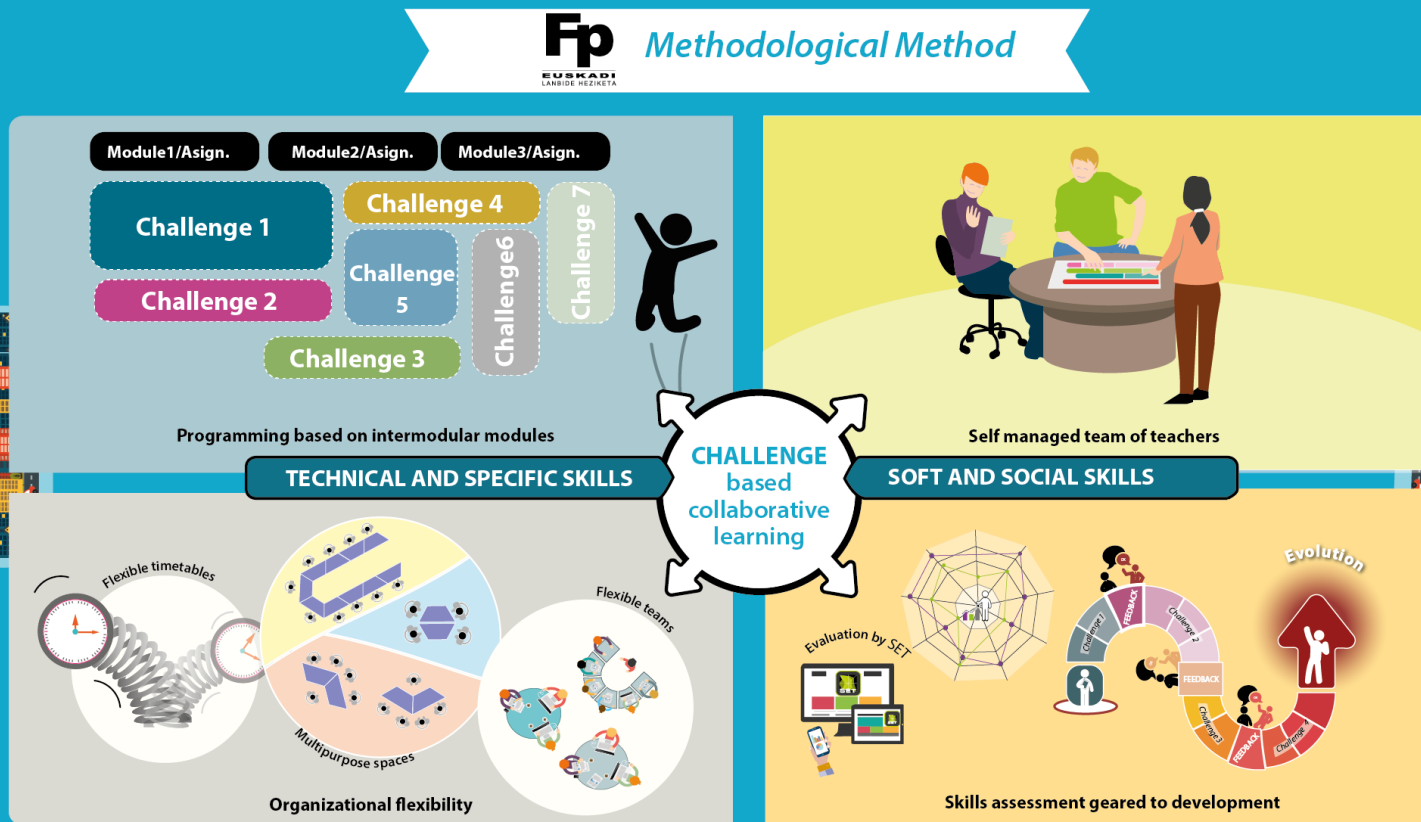


- **A disruptive methodological change** to adapt our students to the professional profile that the **industry needs to be competitive**
- To get the maximum learning potential of the students **profesional competences** development (Technical skills + Soft skills)
- Team work, creativity, flexibility, digital skills, communication, social and personal responsibility,... to be able to analyse, understand, synthetize, transmit, judgement, decide,....

# OUR MODEL ETHAZI

Common  
ecosystem

Society – Companies

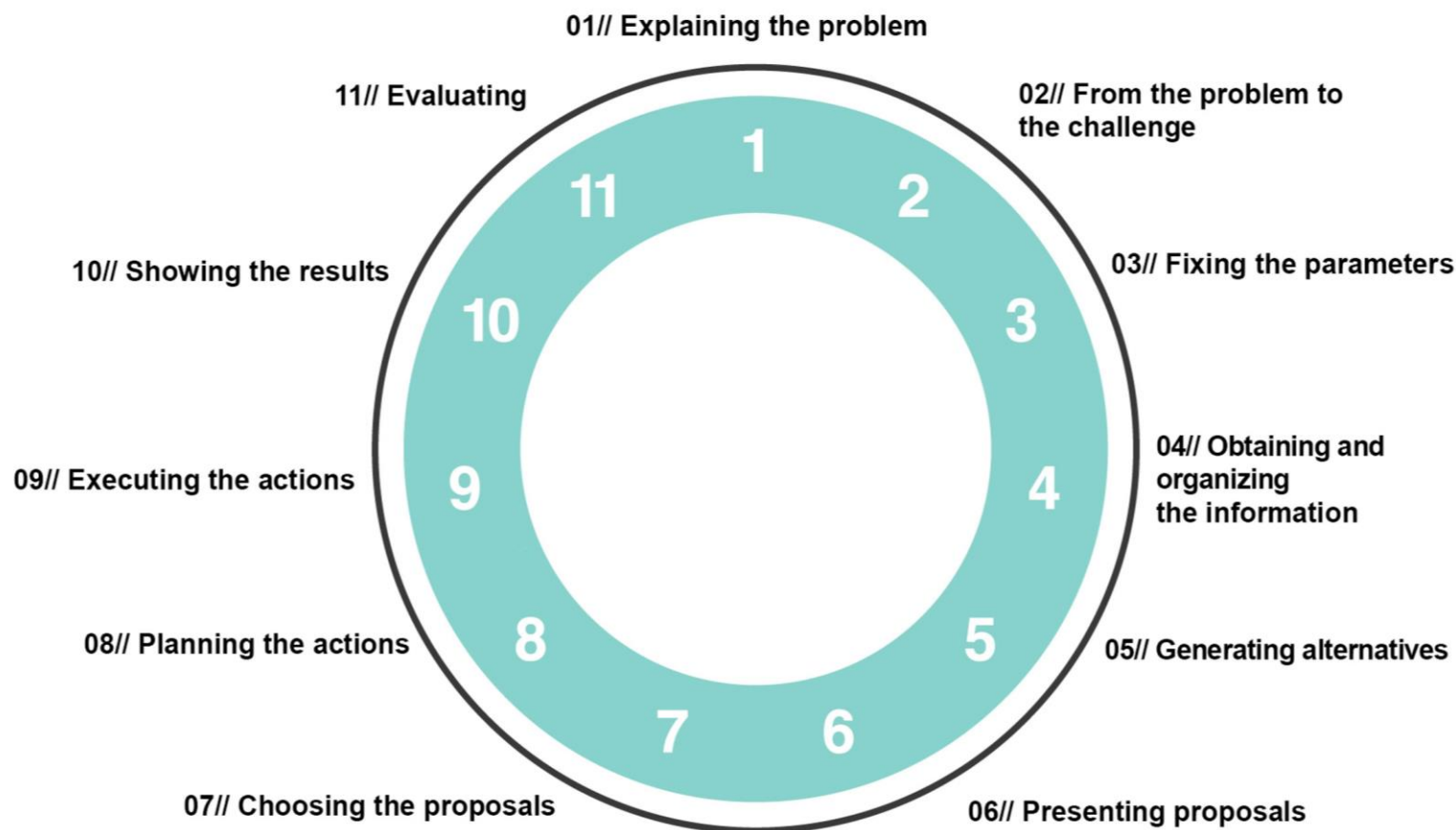


Society – Companies

Common  
ecosystem

**ETHAZI**

# Challenges



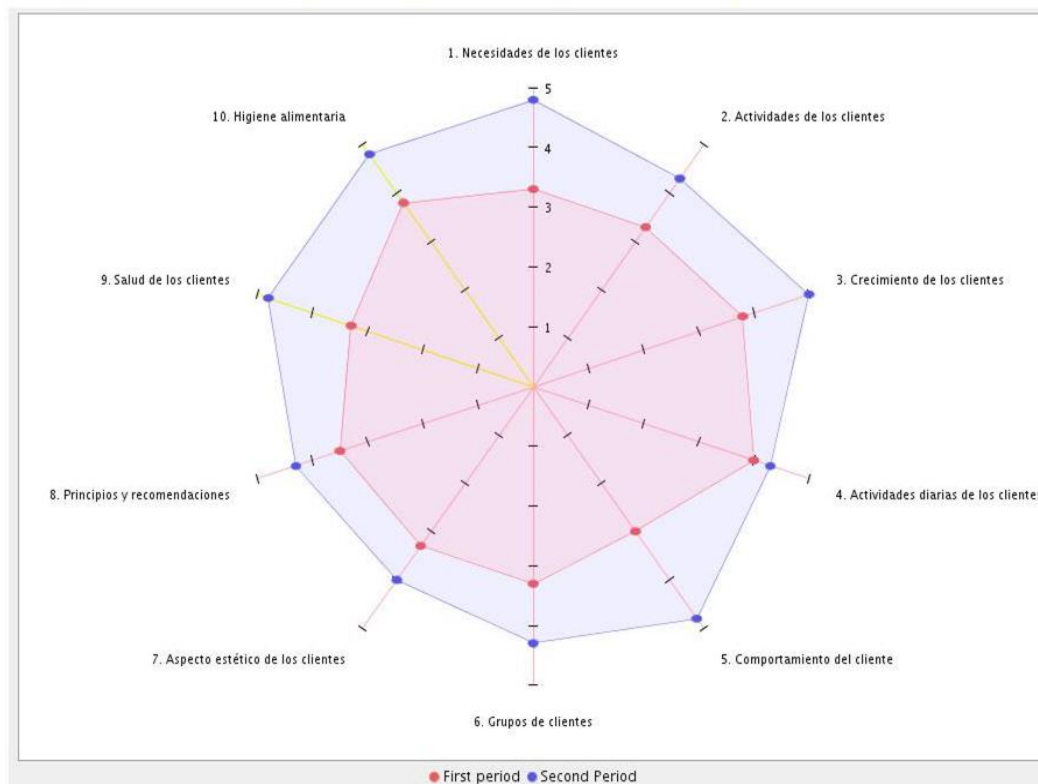


# Challenges

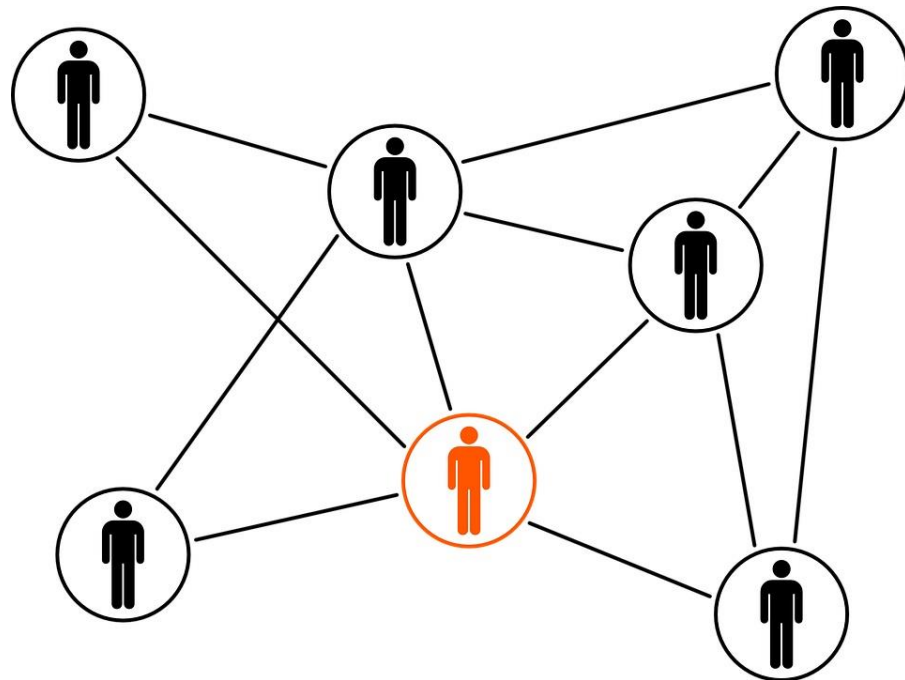


The IMH, Machine Tool Institute is an Advanced Centre in Manufacturing, which offers specialised training in Advanced Manufacturing, and Innovation services for companies.

# New focus of assessment

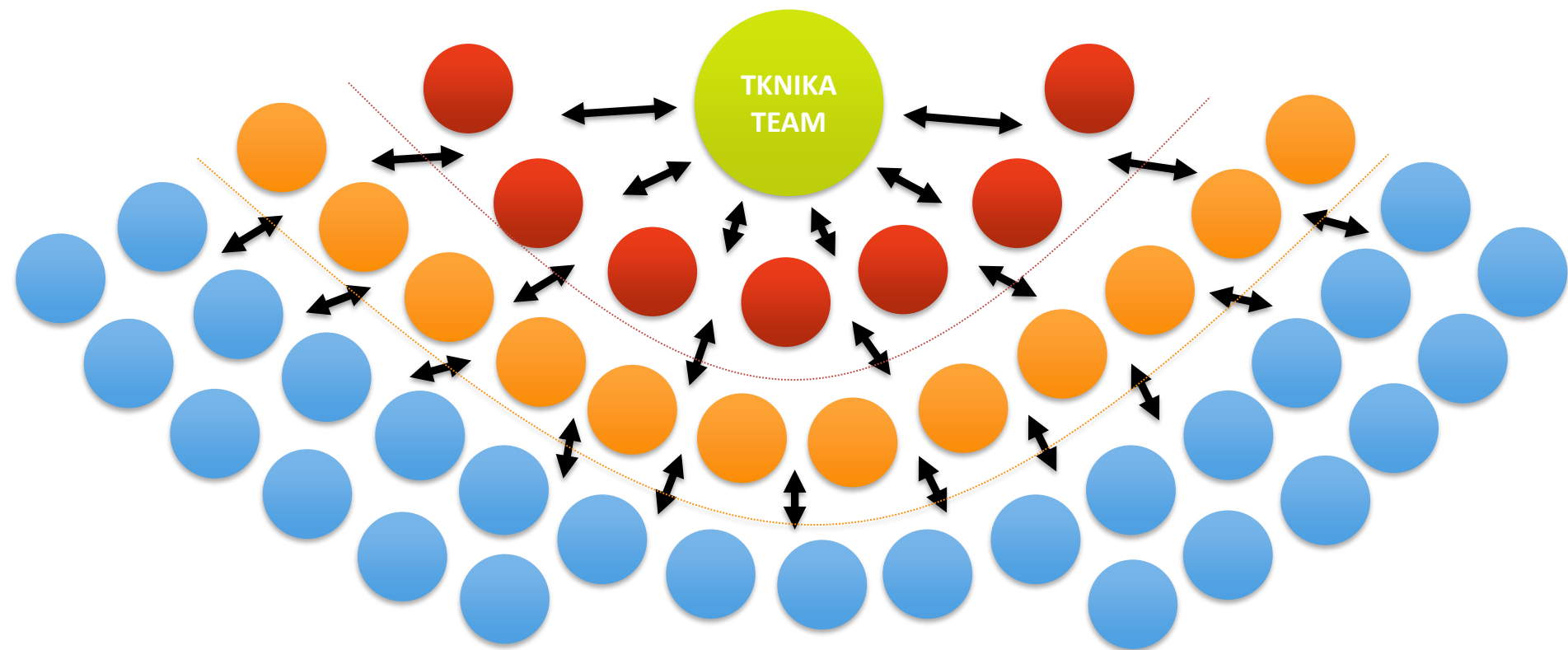


# Networking



- Team work
- Learning Community: public and private colleges
- Alliances and agreements with national or international companies, universities, technologic centers and institutions related with innovation in learning.

# Deployment through network nodes with learning communities and mentoring



Teaching staff with experience in the model Ethazi advise other teachers in the implementation of new cycles Ethazi

# SOME DATA ABOUT OUR PROGRAMME “ETHAZI”

2016-2017

0

Number of Cycles

0

Colleges involved

0

Teachers involved

0

Students



## SOME DATA ABOUT OUR PROGRAMME “ETHAZI”

	13-14	14-15	15-16	16-17
Number of cycles	5	18	91	<b>142</b>
Colleges involved (around 75 in total)	5	5	30	<b>47</b>
Teachers involved	25	90	455	<b>1646</b>
Students involved	100	450	2275	<b>3550</b>
Leaders trained		15	35	<b>50</b>
Cycles using SET	18	32	104	<b>160</b>
Teachers on training programmes	67	477	965	<b>1296</b>

# Flexibility



ESPACIO INFORMATIVO



# THE RESULTS

- Positive impact: students, teachers, companies,...
- Lower academic drop out
- Teachers Training : high number of registrations.

Eskerrik asko!

**Thank you!**

It's time for questions.