



Poverty in Schools: Challenges and Recommendations

Uğur Şeker

School Counselor

Ministry of National Education

Türkiye

Funded by: The Scientific and Technological Research Council
of Türkiye (TÜBİTAK, 2224-A)

A large orange circle is positioned on the left side of the slide, partially cut off by the edge. The word "Outline" is written in white text inside this circle.

Outline

Definition of poverty

Relationship between education and poverty

Challenges Faced by Impoverished Students in Schools

Recommendations for Schools Regarding Impoverished Students

Conclusion

Definition of poverty

Poverty is a spectrum

Lack of sources

Effecting the functionality

Chronic and inter-generational

Restrictive



Challenges of being poor

- Neglected and inadequate housing
- Living in high crime rates
- Poor physical and mental health
- Inability to access good treatment
- Inability to access education



Living in the over-populated places (house and neighborhood)

Lack of green spaces

Stigmas (dirty, lazy, ignorant etc.)

Classism and discrimination

Relying on others



Different types of poverty

Situational poverty

Generational poverty

Absolute poverty

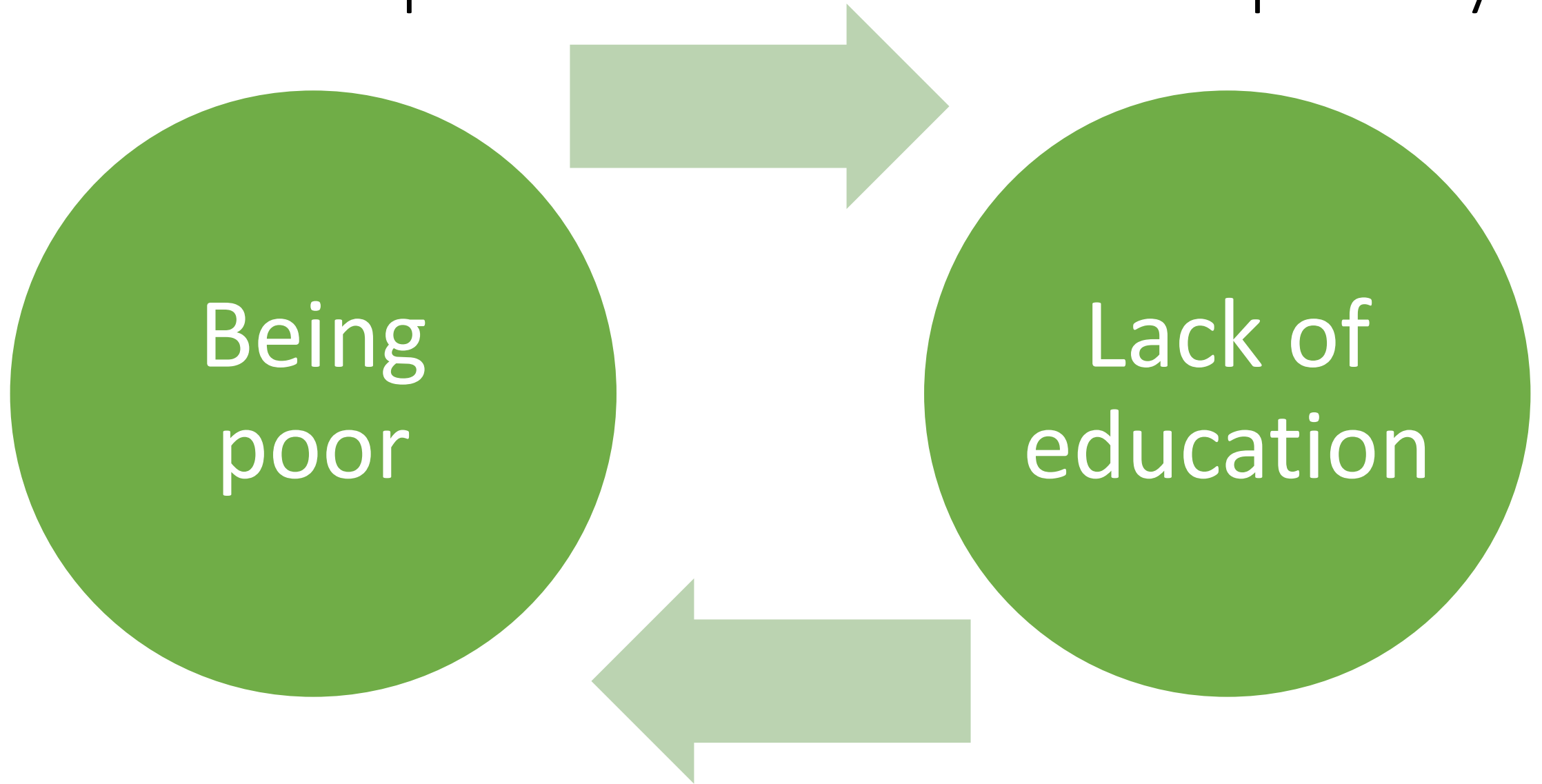
Relative poverty

Urban poverty

Rural poverty

With different types, comes similar challenges

Relationship between education and poverty



Challenges Faced by Impoverished Students in Schools

Inability to allocate financial sources for school-related materials

Lack of participation in extracurricular activities (field trips for example)

Lack of leisure time

Low self-efficacy

Low academic expectations

Being at risk for abuse

Absenteeism

Low literacy of parents

Undiagnosed mental health issues

Discrimination and social exclusion

Less functional time with parents

Mental health issues

Why is poverty linked to mental health problems?



Social Class Worldview Model (Liu, 2013)

Economic culture

Tendency to compare self with others

Perceived social class

Required capitals (social, culturel and human capitals)

Homeostasis (perceived social class and reality)

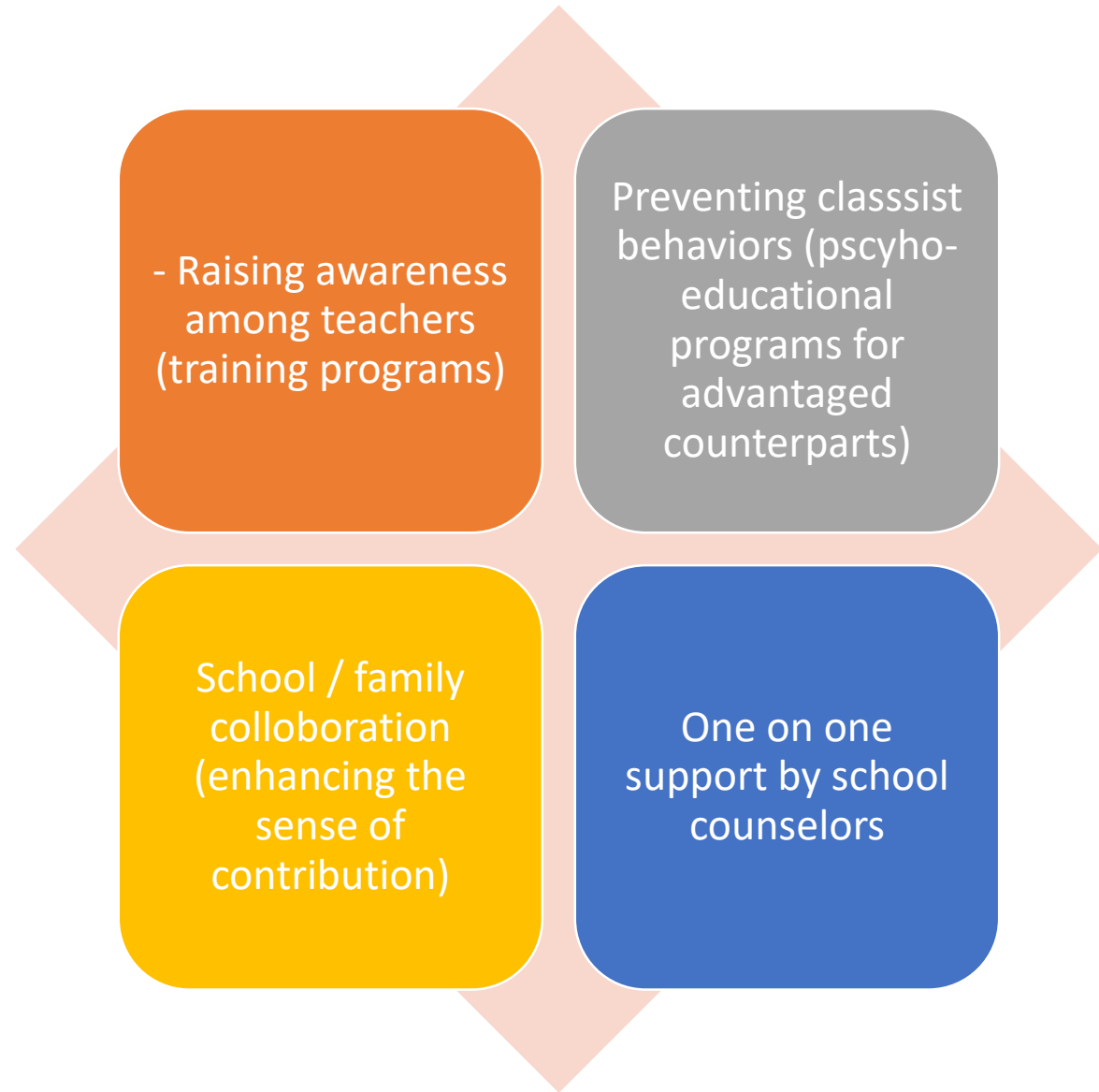
Good homeostasis => good mental health

Recommendations for Schools Regarding Impoverished Students

- Financial sources and stable jobs
- Inclusive classroom atmosphere
- Talent screening (preventing violence)
- Risk assessment
- Encouraging attitudes



Recommendations for Schools Regarding Impoverished Students



Conclusion

Poverty negatively impacts individuals physically, cognitively, and psychologically.

Overcoming poverty, requires specific skills.

Schools need to be more inclusive in helping poor students to acquire these kinds of skills.

References

- Atmaca, T., & Sağlam, D. (2023). Yoksulluk kültürünün öğrencilerin eğitim yaşantılarına ve gelişim alanlarına yansımalarının incelenmesi (Annelerin deneyimleri). *İstanbul Ticaret Üniversitesi Sosyal Bilimler Dergisi*, 22(47), 764-788. <https://doi.org/10.46928/iticusbe.1136832>
- Boardman, J. (2011). Social exclusion and mental health—how people with mental health problems are disadvantaged: an overview. *Mental Health and Social Inclusion*, 15(3), 112-121. DOI 10.1108/20428301111165690
- Buck, R., & Deutsch, J. (2014). Effects of poverty on education. *Journal of Human Sciences*, 11(2), 1139-1148. doi: 10.14687/ijhs.v11i2.3043
- Hoşgörür, T., Evren, M. K., Kahya, O., Sezer, S., Kizir, M., Korkut, P., Yıldırım, K., Hoşgörür, V., & Yeşil, E. (2024). Kent yoksulu ebeveynlerin bakış açısından yoksulluk ve eğitim ilişkisi. *Cumhuriyet Uluslararası Eğitim Dergisi*, 13(2), 353-368. <https://doi.org/10.30703/cije.1293059>
- Jensen, E. (2009). Teaching with poverty in mind: What being poor does to kids' brains and what schools can do about it. ASCD. https://books.google.com.tr/books?hl=tr&lr=&id=FISDxE1z7yMC&oi=fnd&pg=PA1&dq=what+can+we+do+about+impoverished+students&ots=CcJjRc4Hfu&sig=tlGprSB6ZLPAM9wKzLQGHppht3s&redir_esc=y#v=onepage&q=what%20can%20we%20do%20about%20impoverished%20students&f=false
- Kahraman, F., & Kahraman, A. B. (2016). Mevsimlik istihdamın eğitimli gençleri: inşaatlarda çalışan üniversite öğrencileri üzerine bir araştırma. *Süleyman Demirel Üniversitesi Fen-Edebiyat Fakültesi Sosyal Bilimler Dergisi*, (38), 183-201. <https://dergipark.org.tr/tr/pub/sufesosbil/issue/23719/252643>
- King, A. L. (2014). Success against all odds: Lessons learned from successful, impoverished students (Undergraduate honors thesis, Liberty University). Liberty University Digital Commons. <https://digitalcommons.liberty.edu/honors/468/>
- Liu, W. M. (2013). Introduction to social class and classism in counseling psychology. W.M. Liu (Ed.). The Oxford handbook of social class in counseling (pp. 3-20). Oxford University Press. <https://l24.im/iUu1>
- Martono, N., Puspitasari, E., & Lisnawati, L. (2023). Social capital of impoverished students: a study on the strength of social networks, trust, and norms among impoverished students. *Society*, 11(1), 64-81. DOI: 10.33019/society.v11i1.418
- Mulford, B., Kendall, D., Ewington, J., Edmunds, B., Kendall, L., & Silins, H. (2008). Successful principalship of high-performance schools in high-poverty communities. *Journal of Educational Administration*, 46(4), 461-480. <https://doi.org/10.1108/09578230810882009>
- Singh, I. (2019). Victims of circumstance: Impoverished communities, education, and the process of slowly overcoming. *Wardlaw+Hartridge Capstone Research Journal*, 1(1), 49-70.
- Çilek, A., Duzguncinar, T., & Varlık, S. (2025). Poverty and academic achievement in the light of teachers' experiences and perceptions: A Phenomenological study. *Kastamonu Education Journal*, 33(1), 168-179. <https://doi.org/10.24106/kefdergi.1628447>
- Burns, J. K. (2015). Poverty, inequality and a political economy of mental health. *Epidemiology and Psychiatric Sciences*, 24(2), 107-113. doi:10.1017/S2045796015000086
- Evans, G. W., & De France, K. (2022). Childhood poverty and psychological well-being: The mediating role of cumulative risk exposure. *Development and Psychopathology*, 34(3), 911-921. <https://doi.org/10.1017/S0954579420001947>