

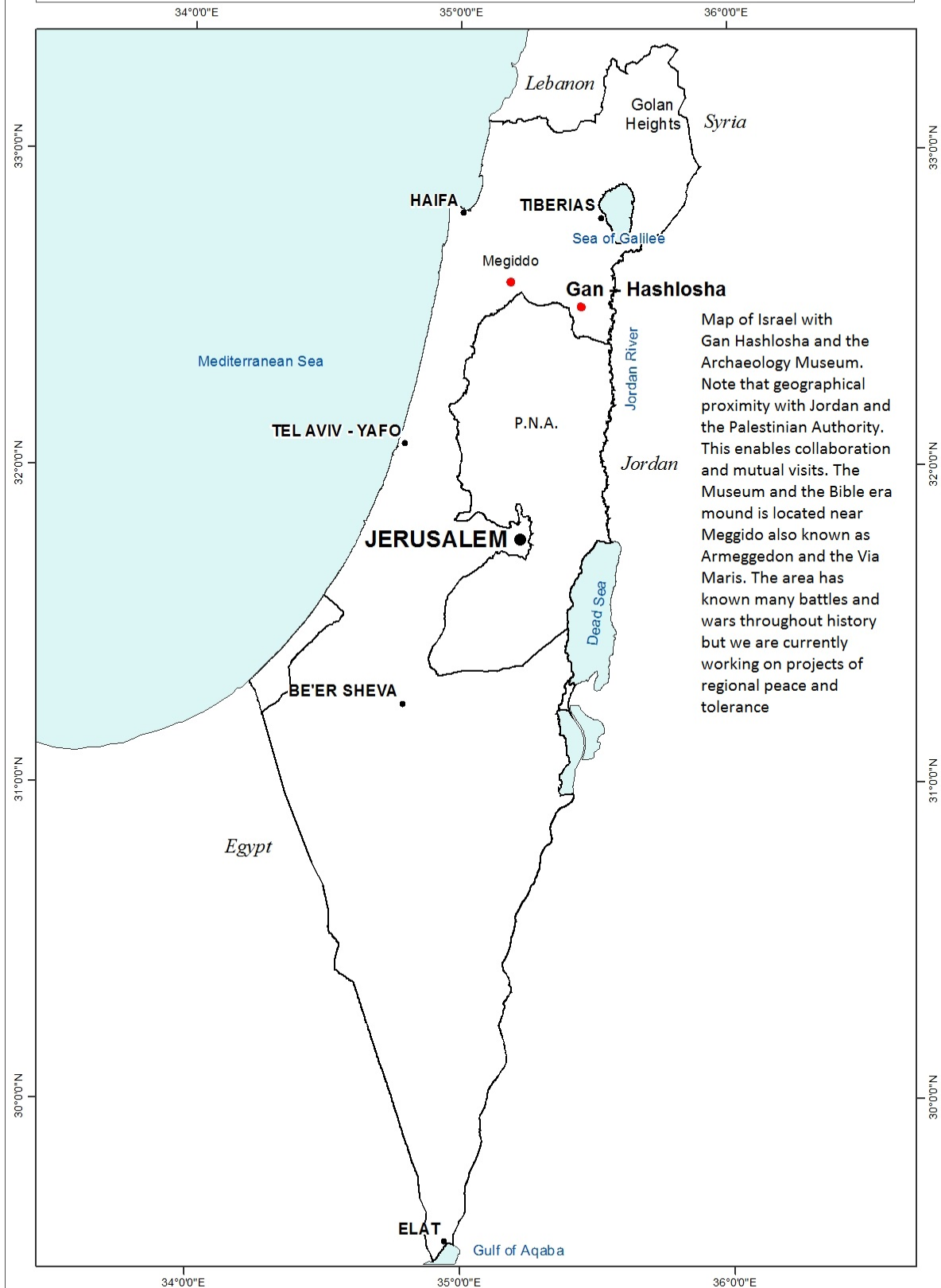
# **Archaeology Museum in Gan-Hashlosha - Israel**

**Mathematical and Geometrical shapes,  
and The world of animal life in the  
Museum of Archeology, as reflected in  
ancient art created in cultures that  
flourished in the past in the  
Mediterranean and Aegean**

**Dror Segal**

[mus@gan3.co.il](mailto:mus@gan3.co.il)

### Location Map



**View of the  
museum and  
the lawns  
around**













13

8





# Lions and big Feline (Felidae)



## Lion shape on handle box covers



**Hercules with  
the skin of the  
hunted lion**



**Panthera pardus (tiger)**





**Panthera pardus (tiger)**

**A cultic nest  
with snakes**





# Baboon Monkey (*Papio hamadryas*)







10

# Roman capital with Birds of prey and Perdicinae





**Circaetus gallicus holding a snake**



**Athena's Owl**



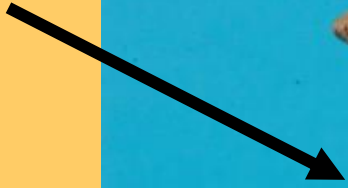
## Part of the mosaic floor in the museum courtyard



## Peacocks on the mosaic floor



**Kind of toy**



**Bird's Figurines**



# Waterfowl in a Nilotic landscape



**cattle**



**The sacred bull  
in Egypt (Apiss)**



## Europe and the Bull \ Ox



**pack animal**





# sheep and goats





sheep and goats





## Horses (Equidae)



**Hercules, Athena and  
horses**



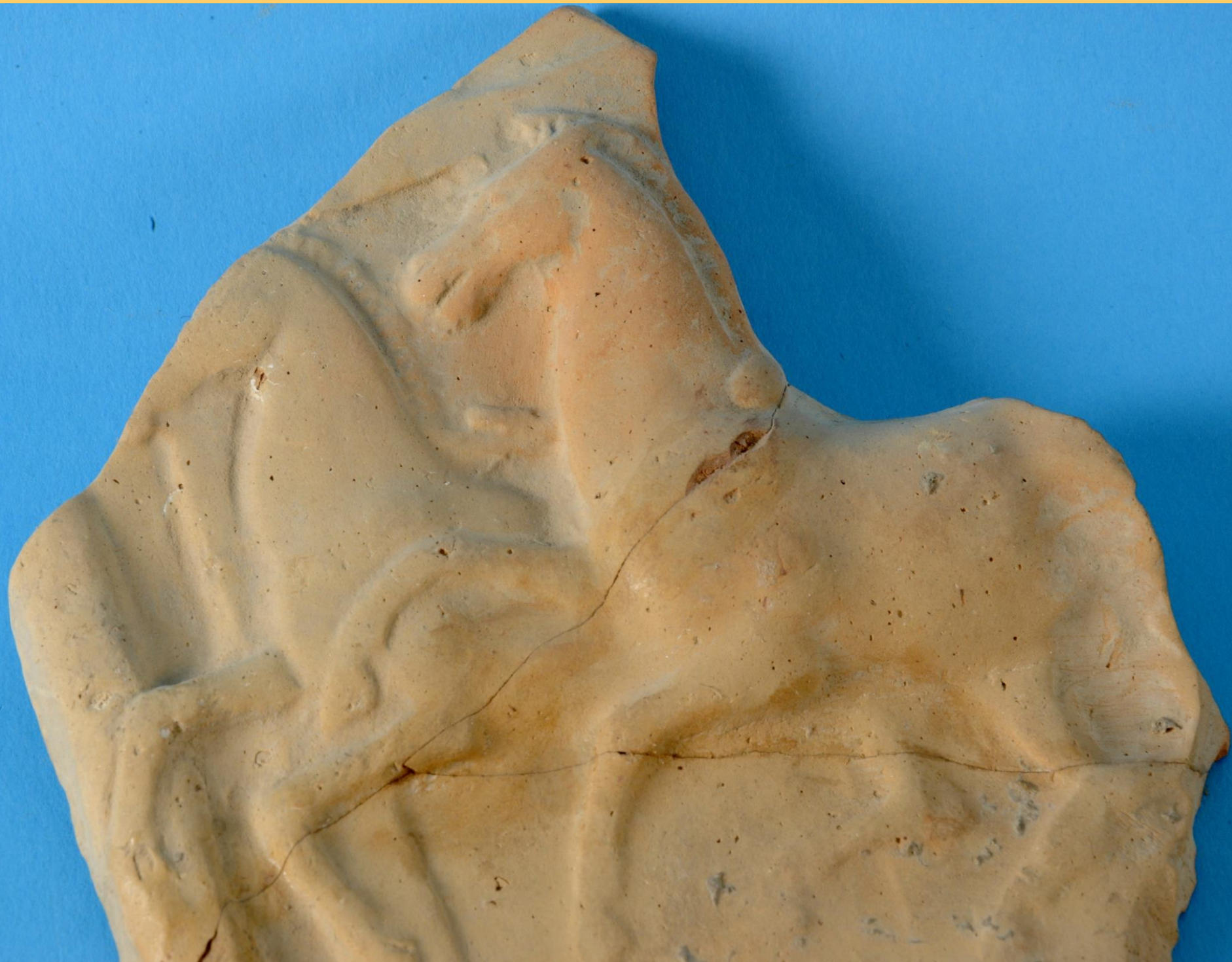


# Rider on his horse



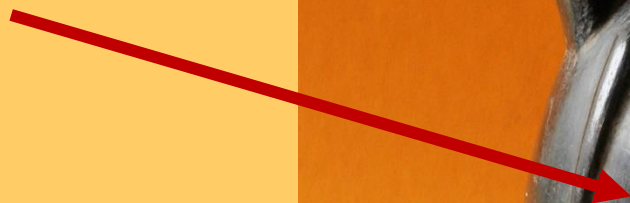
3







**Deer**







## Mythical and strange animals





Hedgehog or porcupine?



# A fish





**Pigs and wild boar**



# Wild boar hunting



# **Mathematics in the Archaeological Museum**

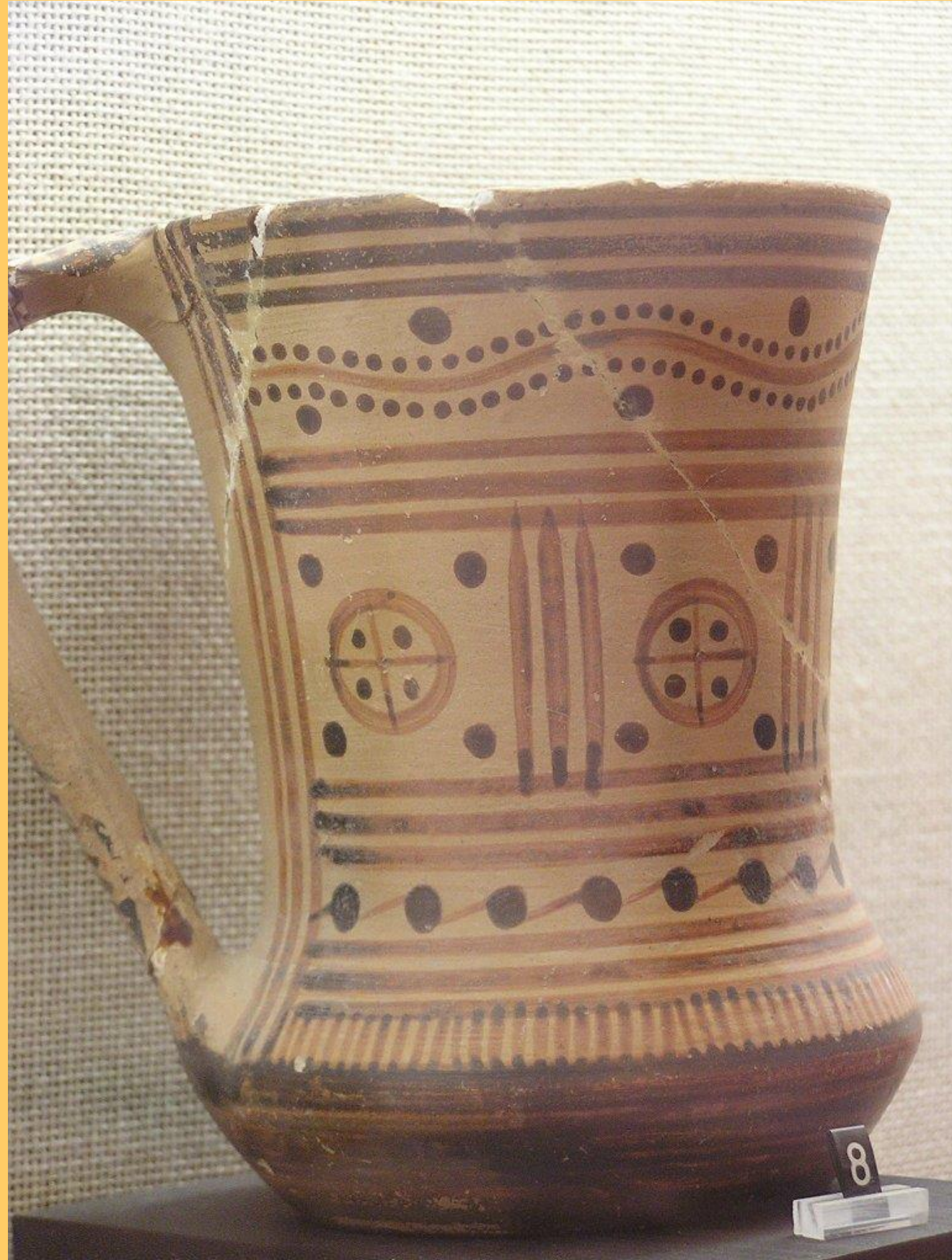


**This artifact exhibit  
animal and  
geometrical shapes**



## Minoan artifacts





## Minoan artifacts



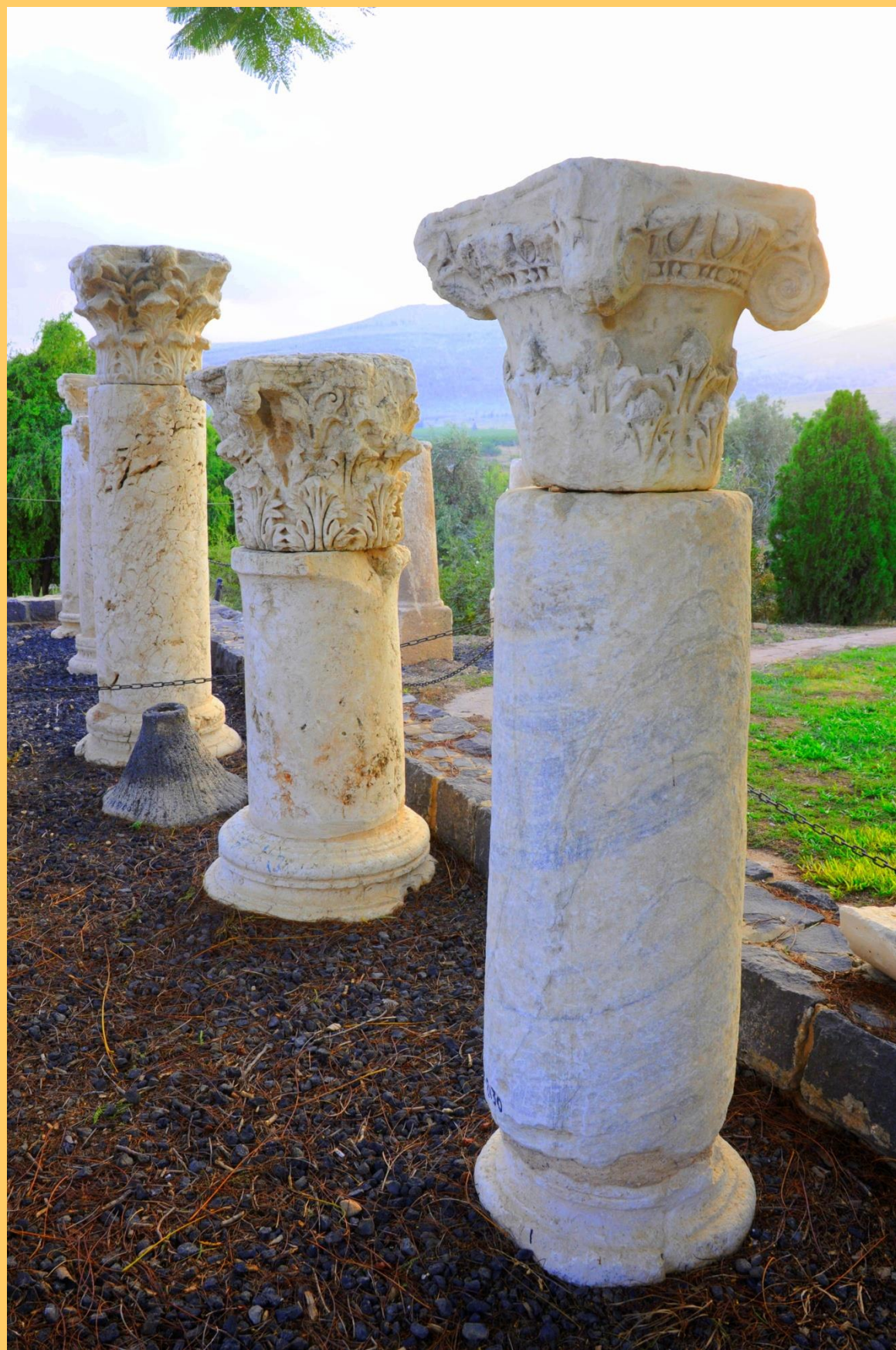
**Etruscan**



**Geometrical shapes on  
ancient Persian pottery**







# Children in a variety of educational activities at the museum











