

**A NEW WAY TO LEARN
LANGUAGES ONLINE:**



LanguageLab
SCUOLA DI LINGUE TELEMATICA



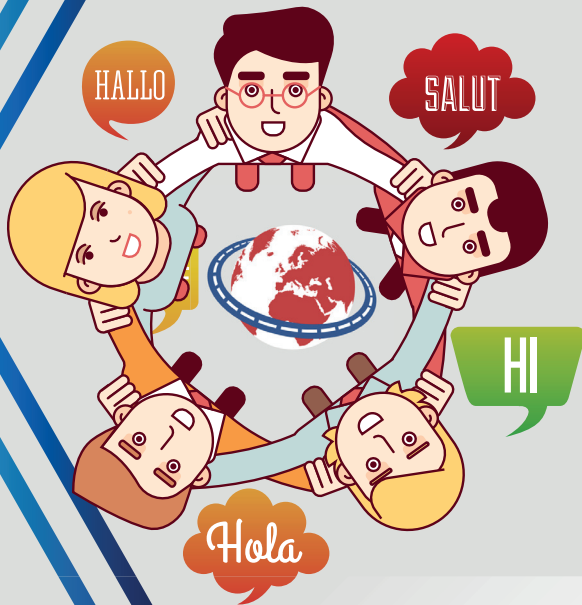
**European
Mobility**



LanguageLab
SCUOLA DI LINGUE TELEMATICA

Beatrice Bernardini

OWNER AND CEO



Valerio Amorese

BUSINESS DIRECTOR

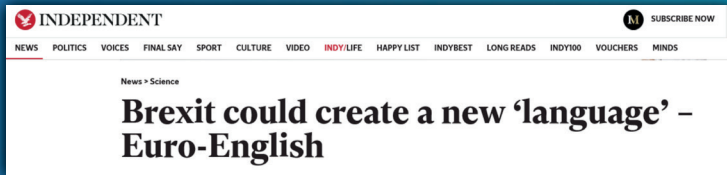
Chiara Loria

ENGLISH AREA MANAGER



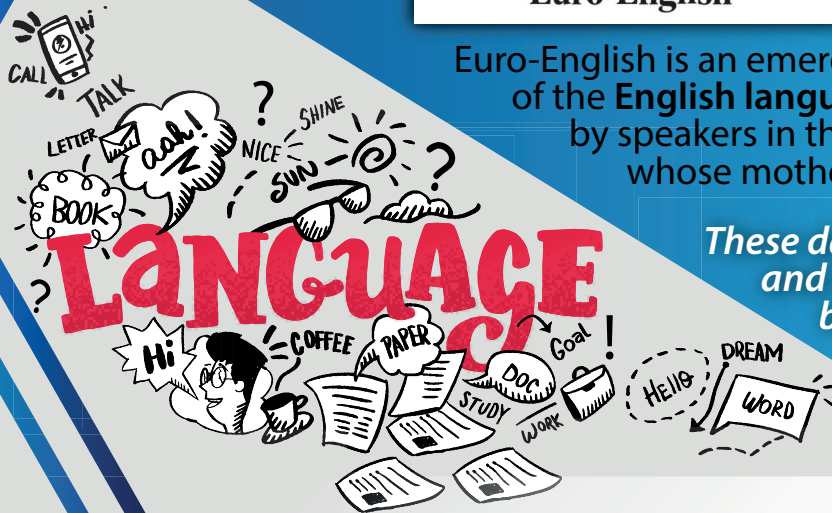
LanguageLab
SCUOLA DI LINGUE TELEMATICA

Language barriers: Euro English



Euro-English is an emerging variety of the **English language** used by speakers in the **European Union** whose mother tongue is not English

These days, it's not just the UK and the US that are divided by a common language.





ACTUAL

English definition

- 1) Real
- 2) Not false or apparent

Euro-English definition:

Current: The actual budget is more generous than the budget for next year.

PLANIFICATION

English definition

This is not an actual word.

Euro-English definition:

Planning.





2018 Annual Report on intra-EU Labour Mobility

Overqualification and obstacles
to access
adequate
jobs

**“At EU-level,
around 30% of EU
movers feel overqualified
for their job.”**

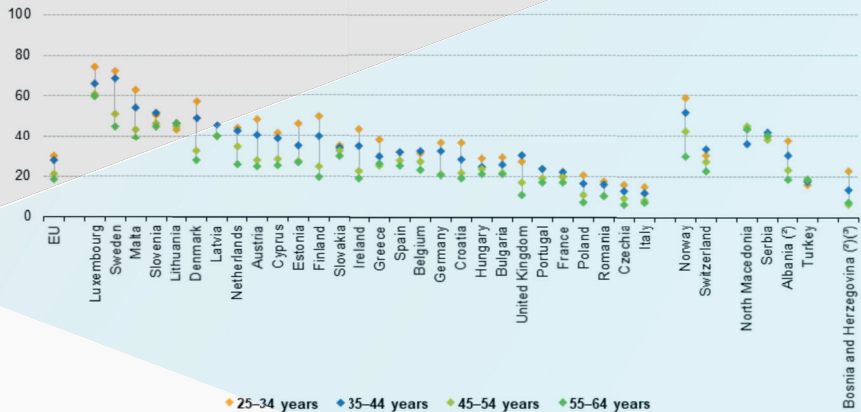
**“Lack of language
skills are the main
obstacles to finding
a suitable job.”**

Source: Eures - 2018 Annual Report on intra-EU Labour Mobility

Italy has most language learners, fewest speakers

Level of command of best known foreign language

People aged 25–64 reporting they were proficient in their best-known foreign language, by age, 2016 (*)
 (% of people who knew at least one foreign language)



(*) Ranked on the share for all persons aged 25–64.

(*) 55–64 years: low reliability.

(*) 45–54 years: low reliability.

Source: Eurostat (online data code: edat_aes_132)

LanguageLab

SCUOLA DI LINGUE TELEMATICA

**A NEW
WAY**

**TO LEARN
LANGUAGES ONLINE:**

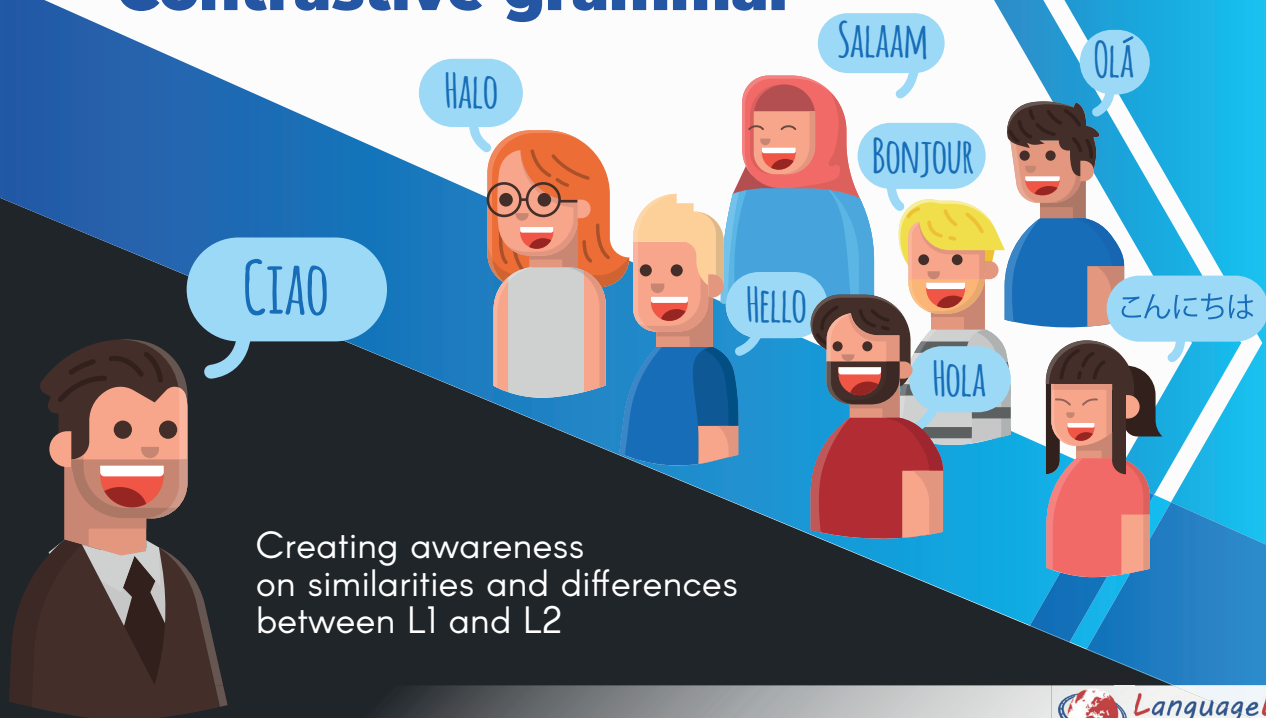
- ✓ Online intensive course
- ✓ Increasing complexity
- ✓ Fully downloadable material
- ✓ Targeted exercises
- ✓ Live lessons with real tutors
- ✓ Learning goals
- ✓ Teaching support throughout the course

*High
performance
learning!*



LanguageLab
SCUOLA DI LINGUE TELEMATICA

Contrastive grammar



Creating awareness
on similarities and differences
between L1 and L2



**First steps
towards integration**

**Language is the expression
of culture** and
**culture is the mirror
of language**



LanguageLab
SCUOLA DI LINGUE TELEMATICA

Teaching support

THROUGHOUT
THE COURSE



LanguageLab
SCUOLA DI LINGUE TELEMATICA

A woman with long brown hair is sitting at a white desk in a bright room. She is looking at a laptop screen with a thoughtful expression, her right hand resting on her forehead. On the desk, there is a white mug, a bowl of snacks, and a smartphone. A large blue arrow graphic points from the left towards the text on the right.

Motivational support

IDENTIFYING SPECIFIC
NEEDS TO TAILOR
OUR LESSONS
FOR A MORE PROFICIENT
LEARNING CURVE

LanguageLab and European mobility

GERMAN
INTENSIVE
COURSE

CUSTOMIZED
COURSES

telc
LANGUAGE TESTS

TELC
PREPARATION



LanguageLab
SCUOLA DI LINGUE TELEMATICA

High performance learning

A NEW WAY
TO LEARN LANGUAGES
ONLINE







THANK YOU



LanguageLab

SCUOLA DI LINGUE TELEMATICA

www.languagelab.it
info@languagelab.it

+ 328 2520046

segui su   