



The Role of Idaho Museum of International Diaspora in Fostering Global Skills, Emotional and Cultural Intelligence of Trainee Teachers

Presenters:

Anna Slatinská, PhD (Slovakia)

Palina Louangketh, DSL (USA)

November 10, 2022 | Florence, Italy

PRESENTERS



**Idaho Museum of
International Diaspora**

Learn. Discover. Explore.



Anna Slatinská, PhD
Professor of English
Professor of American Studies

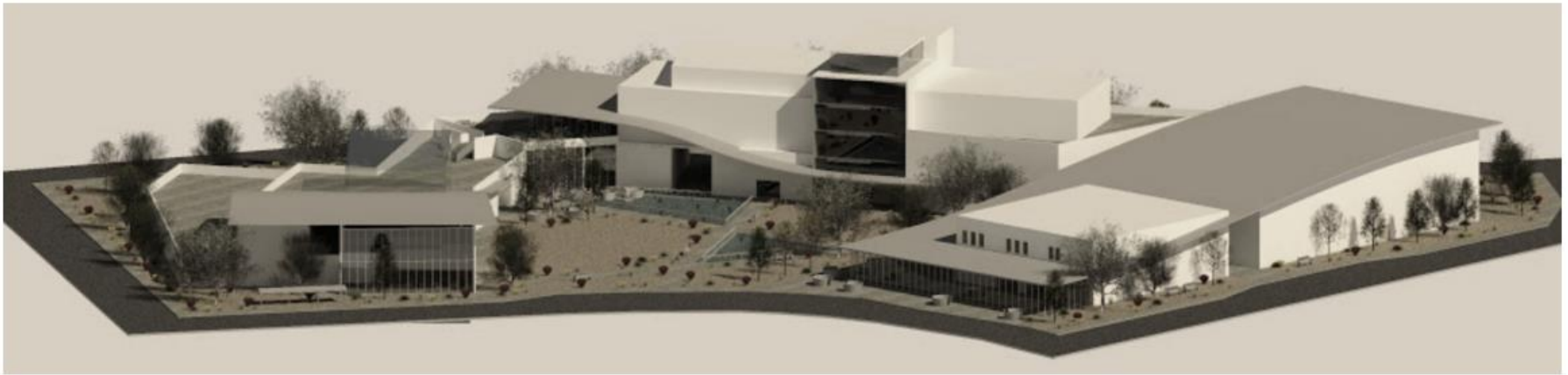


Palina Louangketh, DSL
Founder and Executive Director
Professor of Multicultural Studies

OVERVIEW



1. IMID: Culture+Diaspora in 21st Century
2. Emotional and Cultural Intelligence
3. UMB Journey: Study Findings

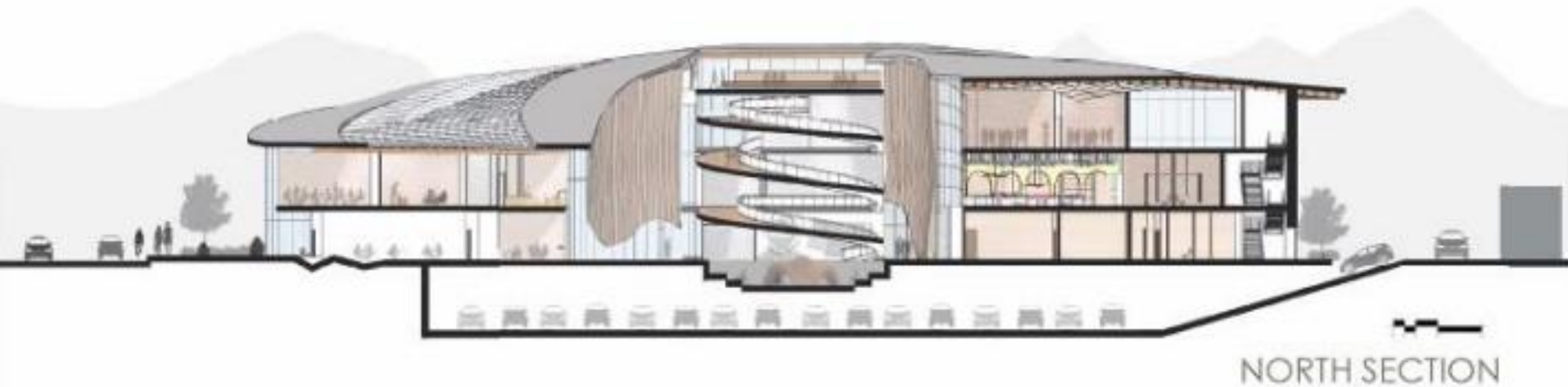


Mission

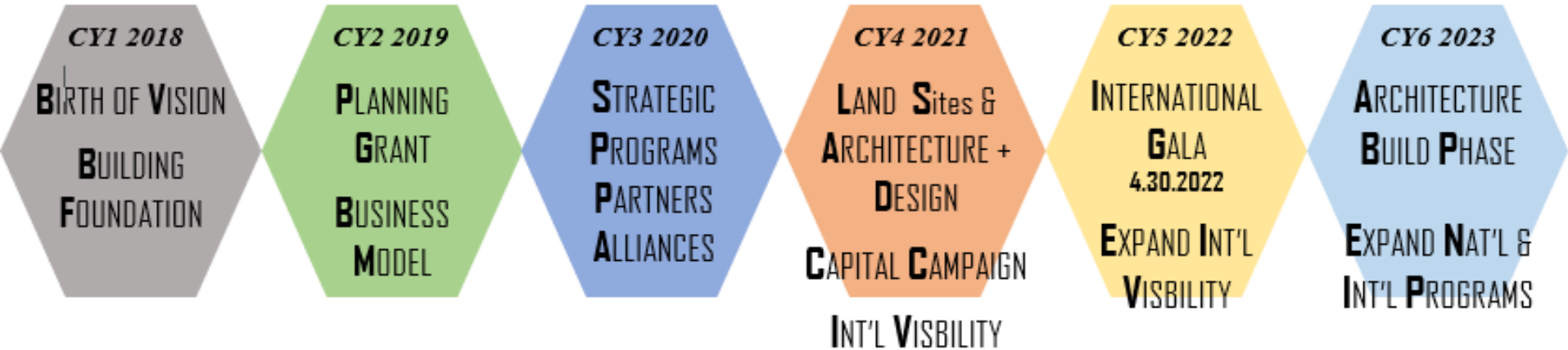
Influence positive
community
transformation.

Vision

Inspire international
movement of
diaspora museums.



TIMELINE





Statement of Need

"...change with the times inform a new approach for more openness, pragmatism, and shared involvement to address issues that impact people, communities, and nations."

Louangketh, 2018. Idaho Museum of International Diaspora

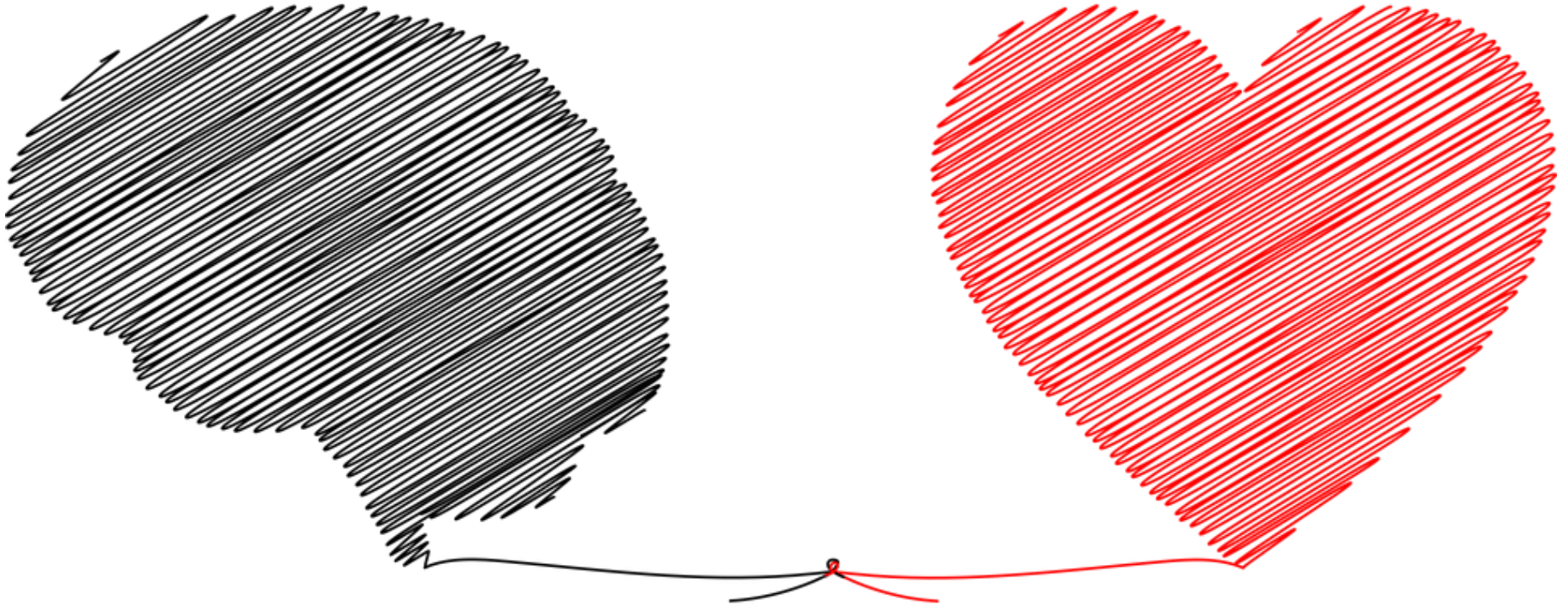
diasporas

“...the involuntary displacement of peoples – children, families, individuals of all ages – from their origin homelands.”

~Idaho Museum of International Diaspora



**“Educating the mind
without educating...**



**...the heart is *no*
education at all.”**

~Aristotle

WHY

*emotional
intelligence*

MATTERS



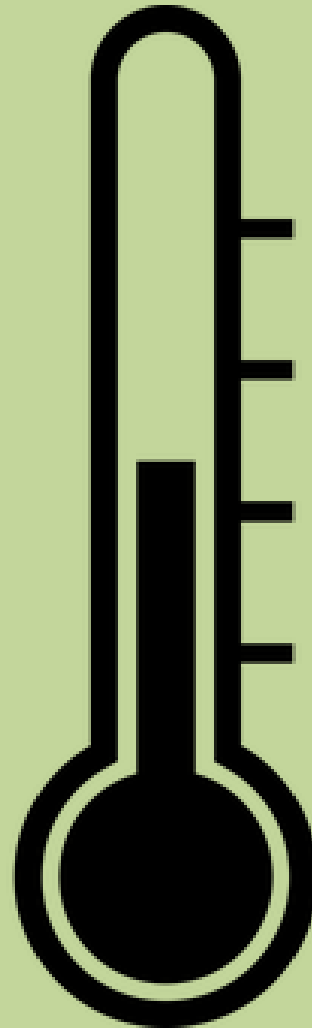
Emotional Intelligence (EQ)

A different kind of thermometer

“Recognize,
understand and
manage *our own*
emotions.”

“Recognize,
understand and
influence the
emotions **of others.**”

Salavoy & Mayer, n.d.



THOUGHTS

EMOTIONS / ENERGY

MOOD

PERSPECTIVES

Idaho Museum of International Diaspora

Experience the world in Idaho.



Afghanistan
Albania
Armenia
Australia
Azerbaijan
Bangladesh
Basque Country
Belarus
Bosnia
Bhutan
Botswana
Bulgaria
Burundi
Cambodia
Cameroon
Canada
Central African Republic
Chad
China
Coeur d'Alene – Schitsu'umsh
Colombia
Congo
Cornish
Costa Rica
Croatia
Cuba

Czechoslovakia
Democratic Republic of Congo
Dominican Republic
Egypt
El Salvador
England
Eritrea
Ethiopia
France
Finland
Gambia
Georgia
Ghana
Germany
Greece
Guatemala

Guinea
Guinea-Bissau
Hawaiians (Native)
Herzegovina
Hispanic
Hmong
Hungary
India
Indonesia
Iran
Iraq
Ireland
Italy
Ivory Coast
Japan
Jews
Kenya
Kootenai Tribe
Kyrgyzstan
Laos
Liberia
Madagascar
Mali
Mexico
Moldova
Morocco

Myanmar (Burma)
Nepal
New Zealand
Nez Perce – Nimiipuu
Nigeria
North Korea
Norway
Pakistan
Palestine
Peru
Philippines
Poland
Polynesia
Puerto Rico
Republic of South Sudan
Romania
Russia

Rwanda
Samoa
Saudi Arabia
Scotland
Serbia
Shoshone-Bannock Tribes
Shoshone-Paiute Tribes
Sierra Leone
Slovenia
Somalia
South Korea
Spain
Sri Lanka
Sudan
Sweden
Syria
Thailand
Togo
Turkmenistan
Uganda
Ukraine
Uzbekistan
Vietnam
Wales
Yemen
Zimbabwe

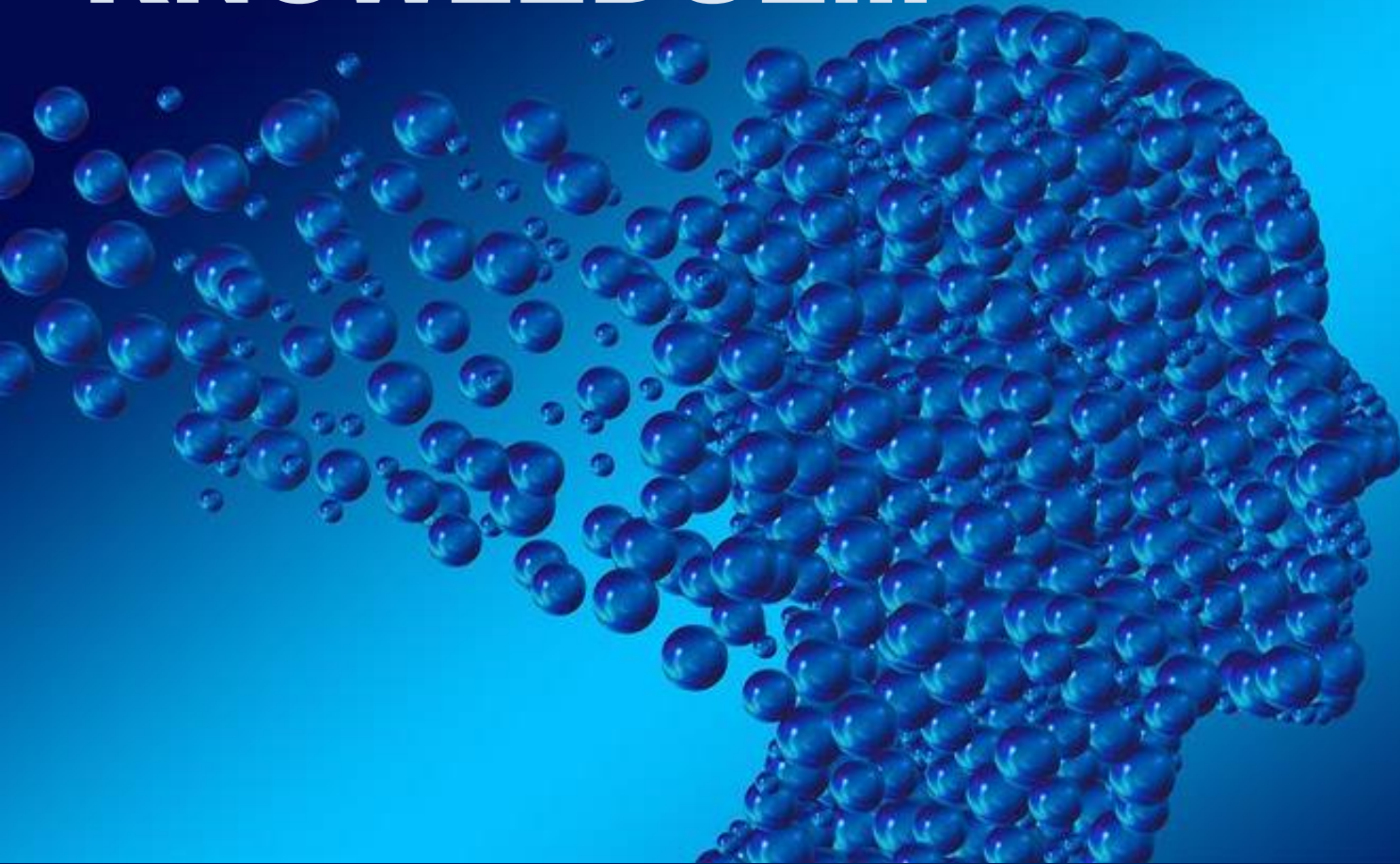
CULTURAL INTELLIGENCE (CQ)



The capability to function effectively across various cultural contexts (national, ethnic, organizational, generational, etc.).

--Soon Ang and Linn Van Dyne, "Conceptualization of Cultural Intelligence" in Handbook of Cultural Intelligence: Theory, Measurement, and Applications (Armonk, NY: M.E. Sharpe, 2008), 3.

KNOWLEDGE...



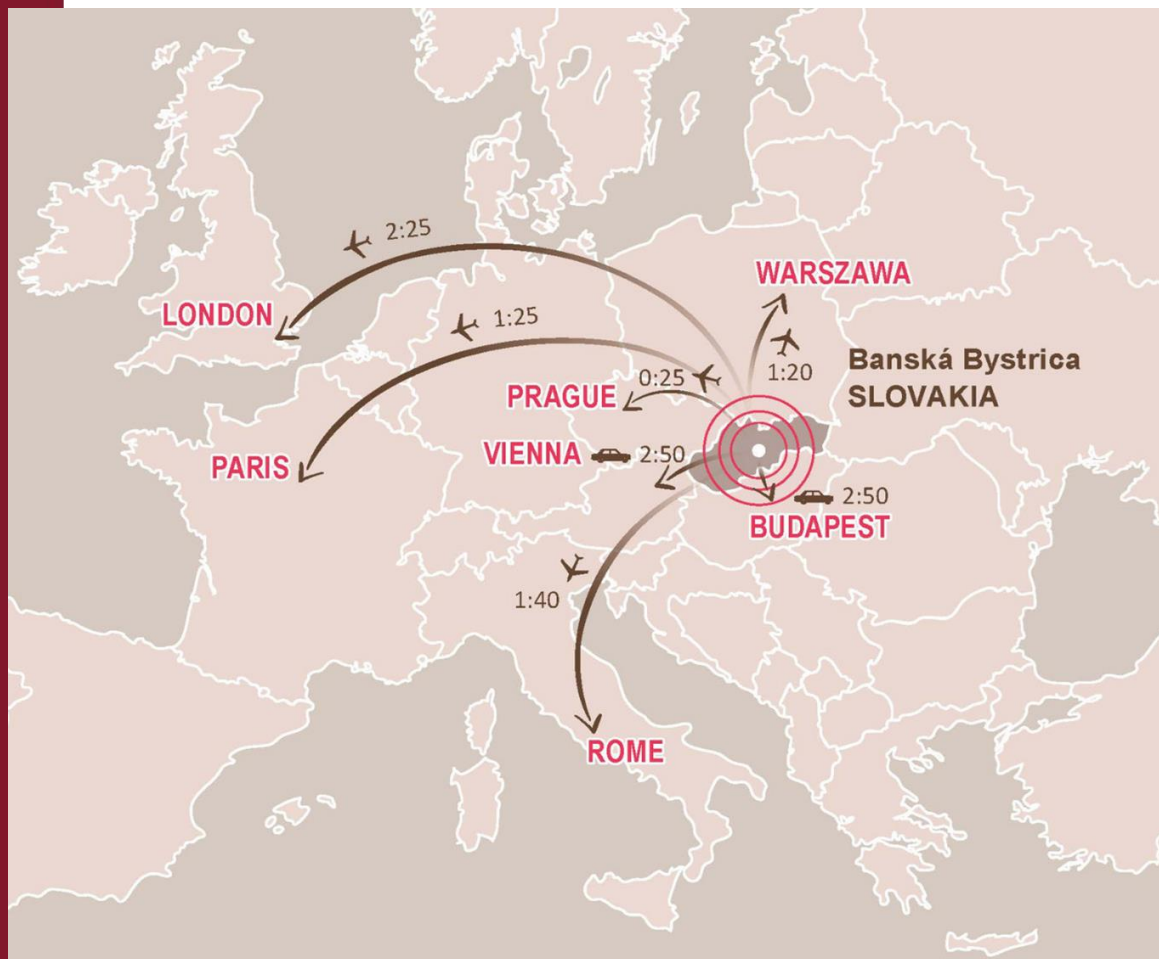
“...has to be improved, challenged, and increased constantly, or it vanishes.”

~Peter F. Drucker

umb

**UNIVERZITA
MATEJA BELA**

V BANSKEJ BYSTRICI



UNIVERSITY IN THE  OF SLOVAKIA

UNIVERSITY WITH A 



ranked at 4th position among Slovak universities in 2020

ranked at 1201+ position among all universities

natureINDEX

5th best university in Slovakia based on the „Nature Index“



umb

UNIVERZITA
MATEJA BELA

V BANSKEJ BYSTRICI



WWW.UMB.SK



umb

UNIVERZITA
MATEJA BELA

V BANSKEJ BYSTRICI



Welcome to
UMB, a University
where you study, a
University where you
feel alive!



University
in the ♥ of Slovakia,
the University with ♥.

- Center for Slovak diasporas world-wide
- Strong research expertise in history, security, citizenship and resilience
 - Inclusive internationalisation @ home policy

Aim #1

Explore skills & competencies necessary to future profession of trainee teachers:

- Global skills
- Emotional Intelligence
- Cultural Intelligence



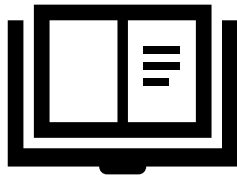
collaboration



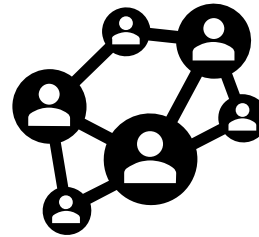
Idaho Museum of International Diaspora

Learn. Discover. Explore.

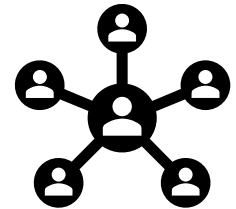
Printed & online materials



Expanding global visibility & influence

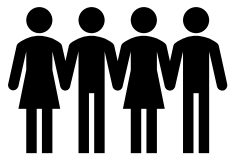


Empower global network of IMID educators

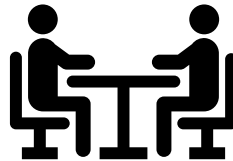


UNIVERZITA MATEJA BELA

V BANSKEJ BYSTRICI



13 UMB teachers



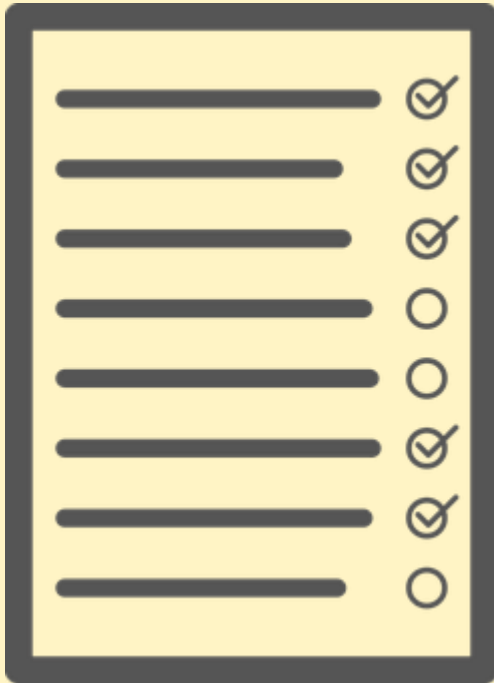
Integration of IMID materials into teaching compulsory & optional courses



Have opinions of teachers evolved on topic of diaspora & culture?

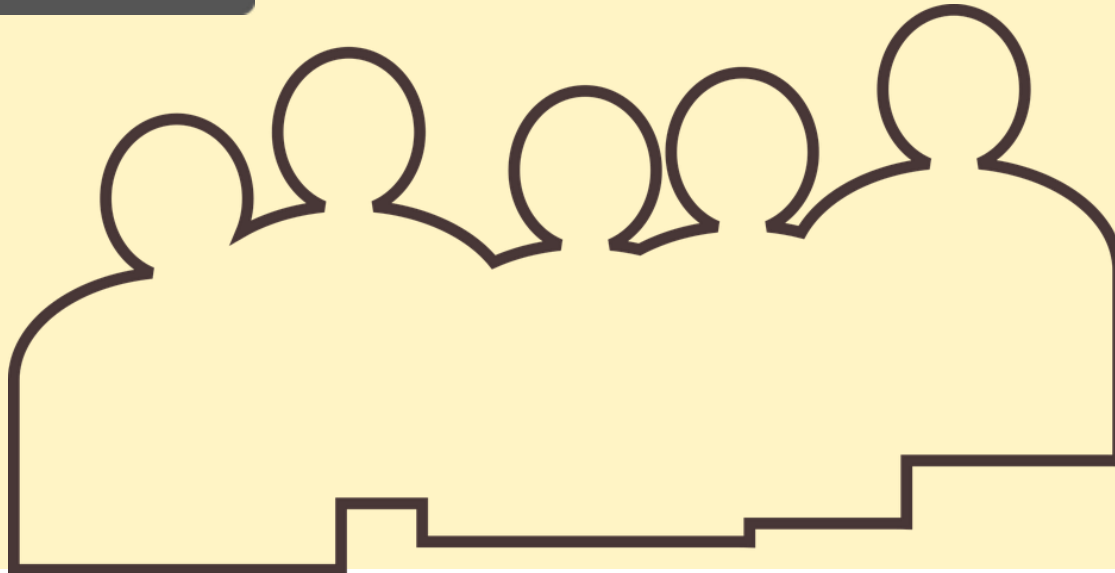
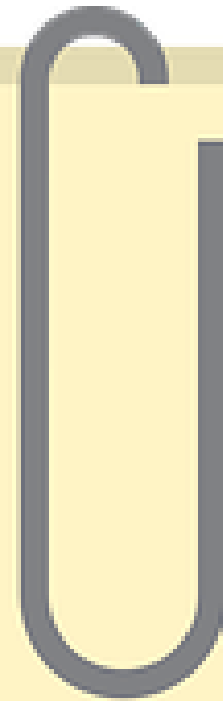
collaboration

DATA



Data Collection Methods:

- **Interviews**
- **Online focus group discussions**



Aim #2

Were elevated levels achieved of all three skills and competencies?

Global Skills

Cultural Intelligence

Emotional Intelligence



Thank You



Anna Slatinská, PhD

Anna.Slatinska@umb.sk

www.umb.sk

Palina Louangketh, DSL

PalinaL@idahomid.org

www.idahomid.org

References

- Ang, S. & Van Dyne, L. (2008). Conceptualization of cultural intelligence. Handbook of Cultural Intelligence: Theory Measurement, and Applications.
- Bouslama, A. & Benaissi Bouhass, B. (2018). Intercultural competence in ELT contexts: A study of EFL teachers' perceptions. *Arab World English Journal*.
- Etri, W. (2021). Intercultural sensitivity and its effects on ELT curricula – teacher insights. ELT Forum.
- Idaho Museum of International Diaspora
- Louangketh, P. (2019). Honors Colloquium (section 2): Seeking opportunity and refuge, Boise State University
- Louangketh, P. (2020). HONORS 392-006: Cross-cultural voices of diaspora. Boise State University Honors College.
- Matej Bel University
- Menabney, D. (2019). Why emotional intelligence needs cultural intelligence when working across borders. *Forbes*.
- Saleh Salama, E. (2020). Intercultural competence in ELT contexts: A study of EFL teachers' perceptions. ResearchGate.
- Slatinská, A. & Louangketh, P. (2022). The role of IMID (Idaho Museum of International Diaspora) in fostering global skills, emotional and cultural intelligence of trainee teachers at Department of English and American Studies in Banská Bystrica. Innovation in Language Learning International Conference. Edition 15.