



**Method and Tool to Achieve  
Necessary Level of Comprehension**

**Comprehension is ability to find, evaluate, compare, manage the received information and pass it over to others.**

**Necessary level of comprehension provides efficient communication within a specified group of individuals (school, conference, university, etc.).**

**Poor understanding is a result of poor communication.**



# Are they talking about one and the same?



**Term "model" denotes interpretation of concepts or relations used in a theory, rule, instruction or other notion by expressing them through familiar phenomena and natural, conventional relation creating a conception easy to perceive intuitively – image.**



**Model works better if it's created  
image is close to recipient –  
experience, culture, climate,  
nationality - are only some of the  
influencing factors.**

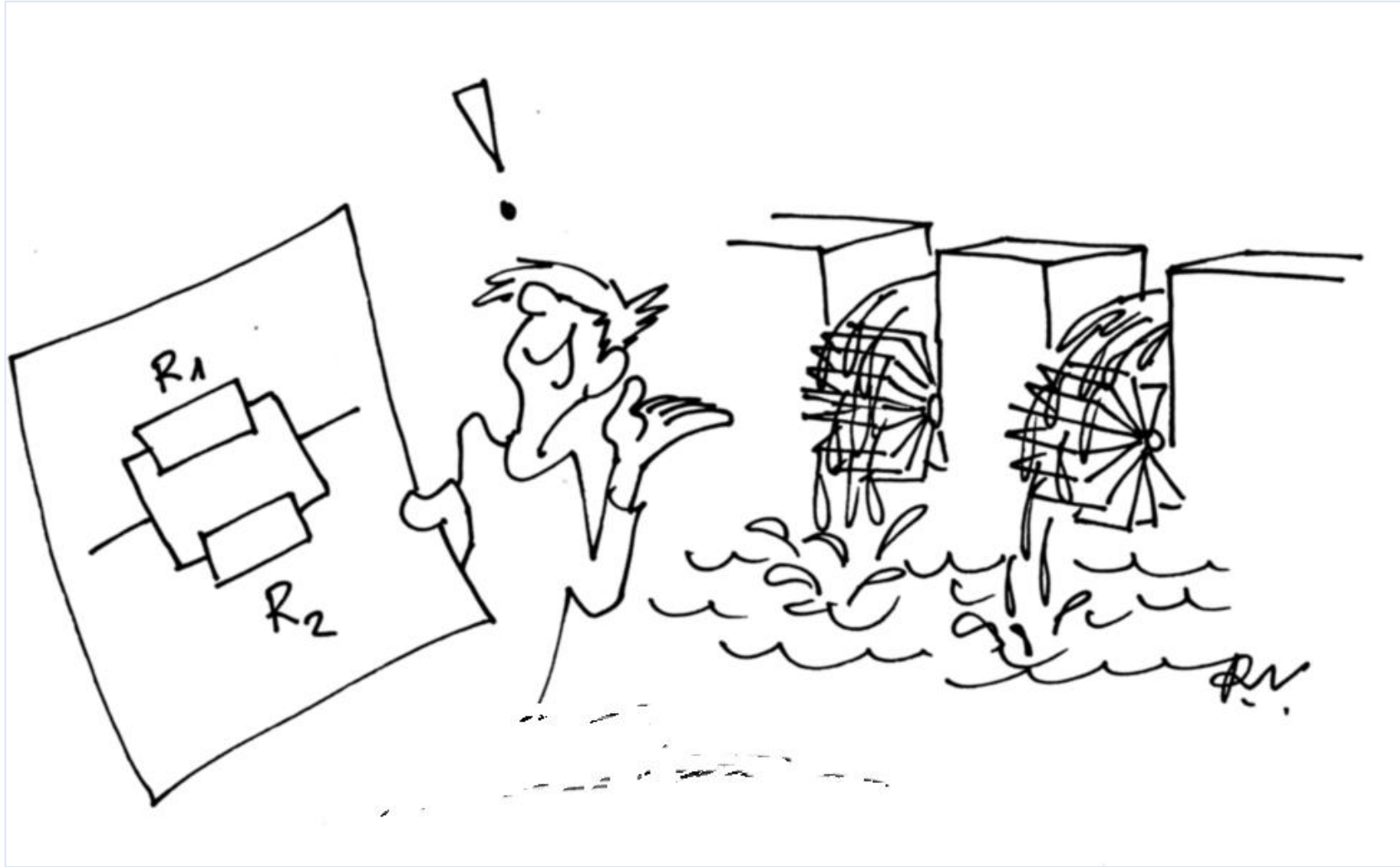
**Models are controlled to avoid  
mistakes.**

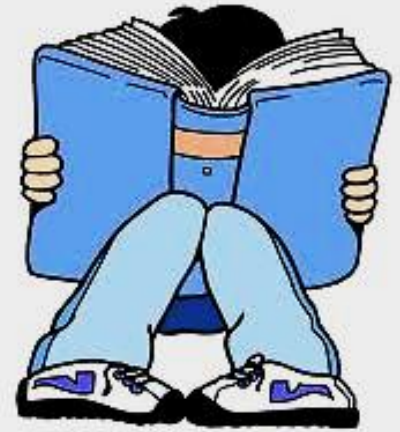


**Models with unfamiliar items are unlikely to be recognized by target audience.**



# This model is perfect for countries rich in water





**Time spent to reach comprehension  
can be notably shortened if new  
concepts and relations are substituted  
with similar or familiar ones.**





**The system allows audience to participate in evaluation of models.**

**Audience can either select the best models or create and propose their own solutions. Both types of involvement provide feedback from the system.**

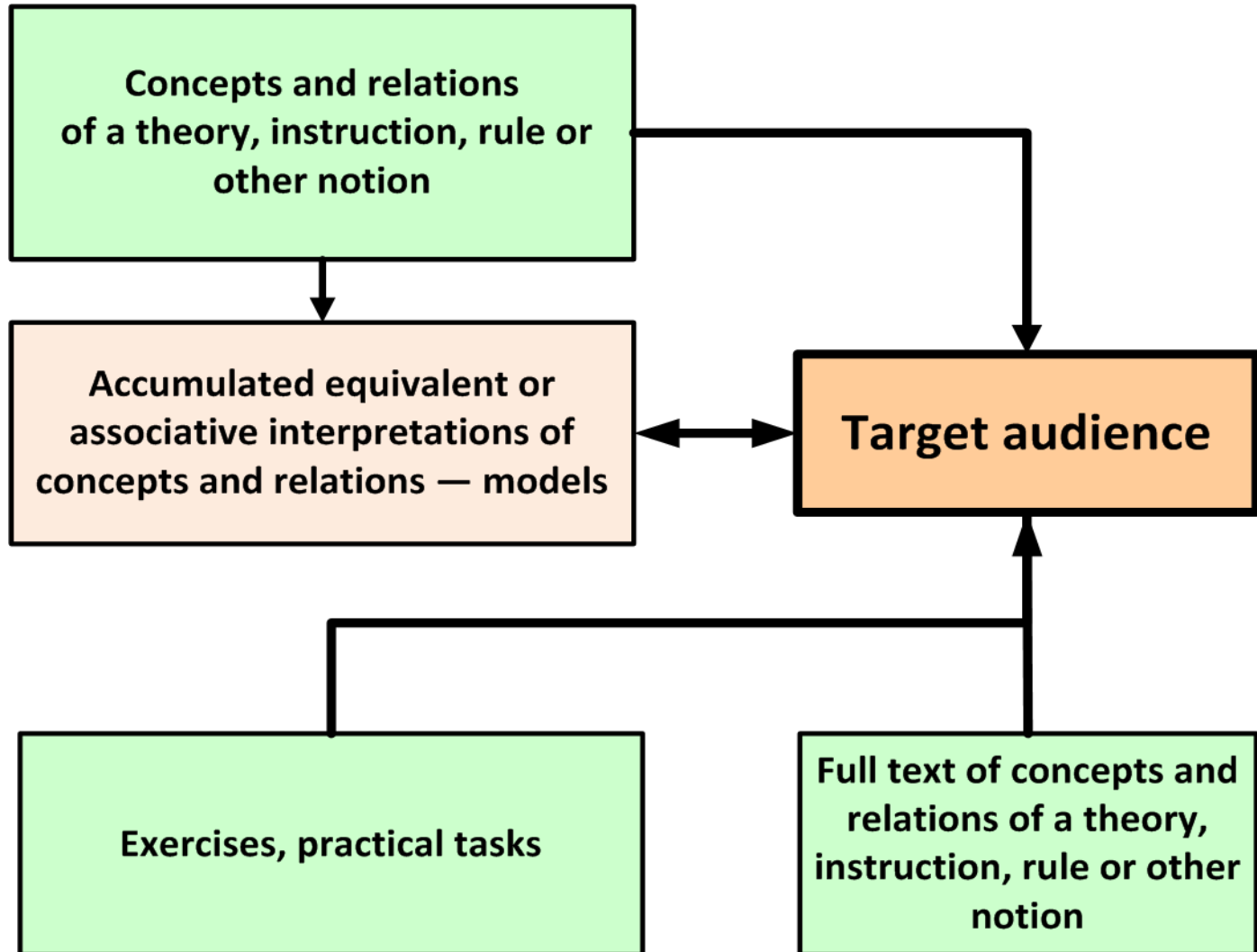


**The feedback gives participating teachers idea of how teaching process could be improved.**

**More, daily monitoring shows tendencies that can be discussed and analysed in educators' workshops.**



**This is proposal of new approach of reaching comprehension using models in close connection with other methods of education.**



**We are here to present our created Internet learning tool:**

**[www.goerudio.com](http://www.goerudio.com)**

**Web contains subject definitions and terms, as well as comprehension models made by students and teachers.**

**Tool can be easily adapted to any country or audience.**

**New audience will be part of the team but involved in creation of their own models.**



**The system is constantly developing,  
thus process becomes a method.**

**Flexibility of the system is one of its  
key advantages as provides  
involvement and makes process  
exciting.**



**System development is being constantly monitored by system administrators – selected and trained subject teachers.**

**Each model is being thoroughly checked before added to the system.**





$$y = f(x)$$



**To some extent also the communication problem has been solved.**

**To determine whether both parties speak of one and the same audience can select relevant illustrative models.**





**Thank you for attention!**

**[www.goerudio.com](http://www.goerudio.com)**

