

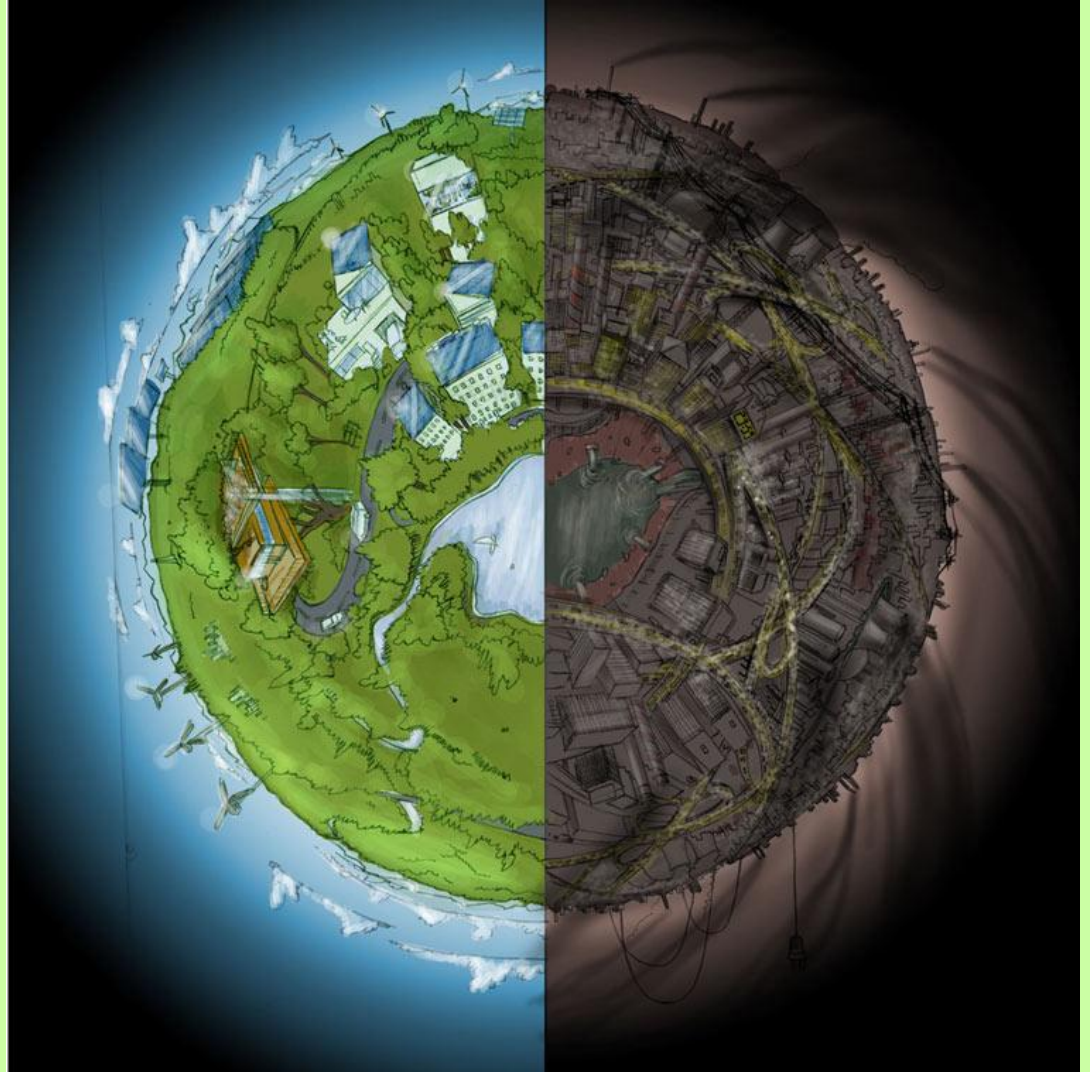
GLOBAL NETWORK

**SUSTAINABILITY
AND EDUCATION**

Firenze / ITALY

June 2012

Karen Blümcke





founded in Firenze 2011

by participants of the Future of Education Conference

The threatening challenge



The mission

- to stimulate change at local level
- to collaborate with global partners
- to support the network partners with ideas, information, materials, links and contacts
- to enable the community to grow the necessary critical mass in the necessary timescales

The means #1:

Education for Sustainable Development

Education for Sustainable Development (ESD) is a vision of education that seeks to empower people to assume responsibility for creating a sustainable future.

It aims at improving access to quality basic education, reorienting education curricula, training and raising public awareness as well as helping people to develop the behaviors, skills and knowledge they need, now and in the future.

(UNESCO, Education for Sustainability — from Rio to Johannesburg: Lessons Learnt from a Decade of Commitment, 2002)

The means: Sustainability in Education

According to the three dimensions of sustainability educational establishments can check their sustainability using the following criteria:

- **economy**
- **ecology**
- **society**

Economy

- energy consumption of buildings
- curricula fit to workplace requirement
- efficiency of teaching and learning
- measuring outcome of teaching/training etc.

Ecology

- low energy strategies
- certified equipment
- use of low carbon servers
- mobility of participants
- choice of the event venue and accomodation for participants
- waste management
- water management etc.

Society

- qualification and situation of staff
- sickness absence rate of staff
- dropout rate of participants
- facilities for handicapped participants and staff members
- gender mainstreaming
- diversity management etc.

Educators as change agents



Let's share ... what we can do!

- Sustainable Organisation of Events:
http://www.bmu.de/files/english/pdf/application/pdf/leitfaden_umweltgerecht_en_bf.pdf
- Calculate transport-related emissions of greenhouse gases:
<http://www.myclimate.org/>

Let's share ... what we can do!



- The EU Eco Label covers an increasing number of product groups, taking in major areas of manufacturing and also tourist accommodation services:

http://ec.europa.eu/environment/ecolabel/index_en.htm

- The European Environmental Audit System

http://ec.europa.eu/environment/emas/index_en.htm



Let's share ... what we can do!



Let's have fun!



Guerilla gardening



The future?!



Join us & share!

- Subscribe to the GNSE-blog:
<http://gnse.wordpress.com/>
- Contact Karen Blümcke
bluemcke@perspektiv-wechsel.de
+49 202 5158 1426

PERSPEKTIVwechsel – Institut für Bildung und Beratung

Hofaue 54

42103 Wuppertal

GERMANY

<http://pwprojects.wordpress.com/> / www.perspektiv-wechsel.de

DANKESCHÖN

GRAZIE

TEŞEKKÜRLER

MUCHAS GRACIAS

KÖSZÖNET

THANK YOU VERY MUCH!