

LEARNING IN DISADVANTAGED AREAS: CURRENT CHALLENGES, FUTURE SCENARIOS



Dr. Ciprian Fartușnic
Institute of Education Sciences
Romania

ISSUES DISCUSSED

- Context of the ZEP Project
- Main areas of intervention
- Results and impact so far
- Lessons learned and future scenarios





CONTEXT

- Socio-economic trends
- School attendance campaign – UNICEF Romania
- Out-of-school Global Initiative
- Education Priority Areas
- Quality assurance policies

SCHOOL ATTENDANCE CAMPAIGN



MINISTERUL
EDUCAȚIEI
CERCETĂRII
TINERETULUI
ȘI SPORTULUI



Institutul
de Științe ale Educației

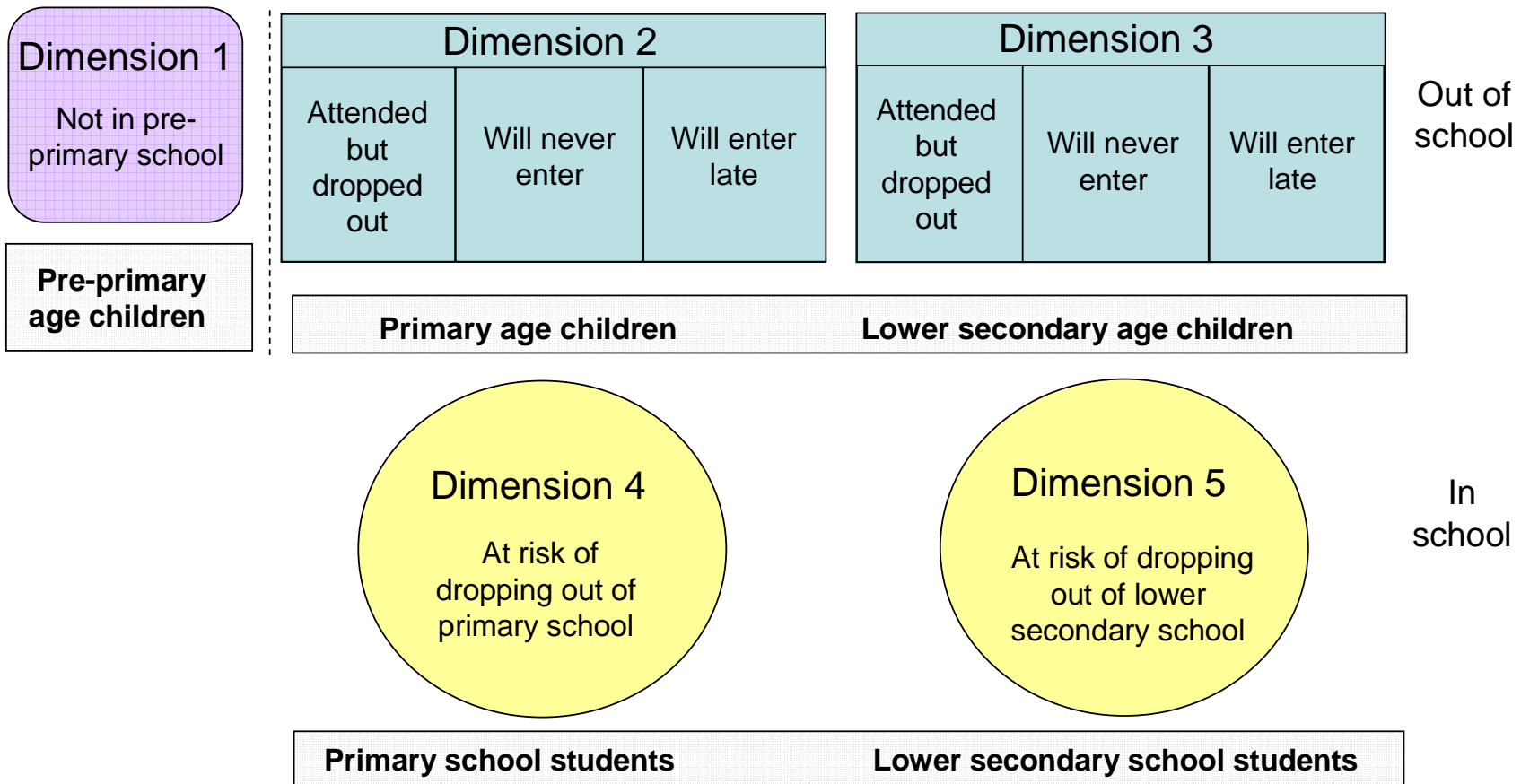


HAI LA ȘCOALĂ!
CAMPANIE PENTRU PARTICIPAREA ȘCOLARĂ



DIMENSIONS OF EXCLUSION

UNICEF/UIS MODEL 2010



MAIN AREAS OF INTERVENTION

- Pilot phase/Development phase
- Didactics
- Education management
- Parents/community involvement



RESULTS AND IMPACT SO FAR 1/2

**Children at risk
and their:**

- families**
- communities**



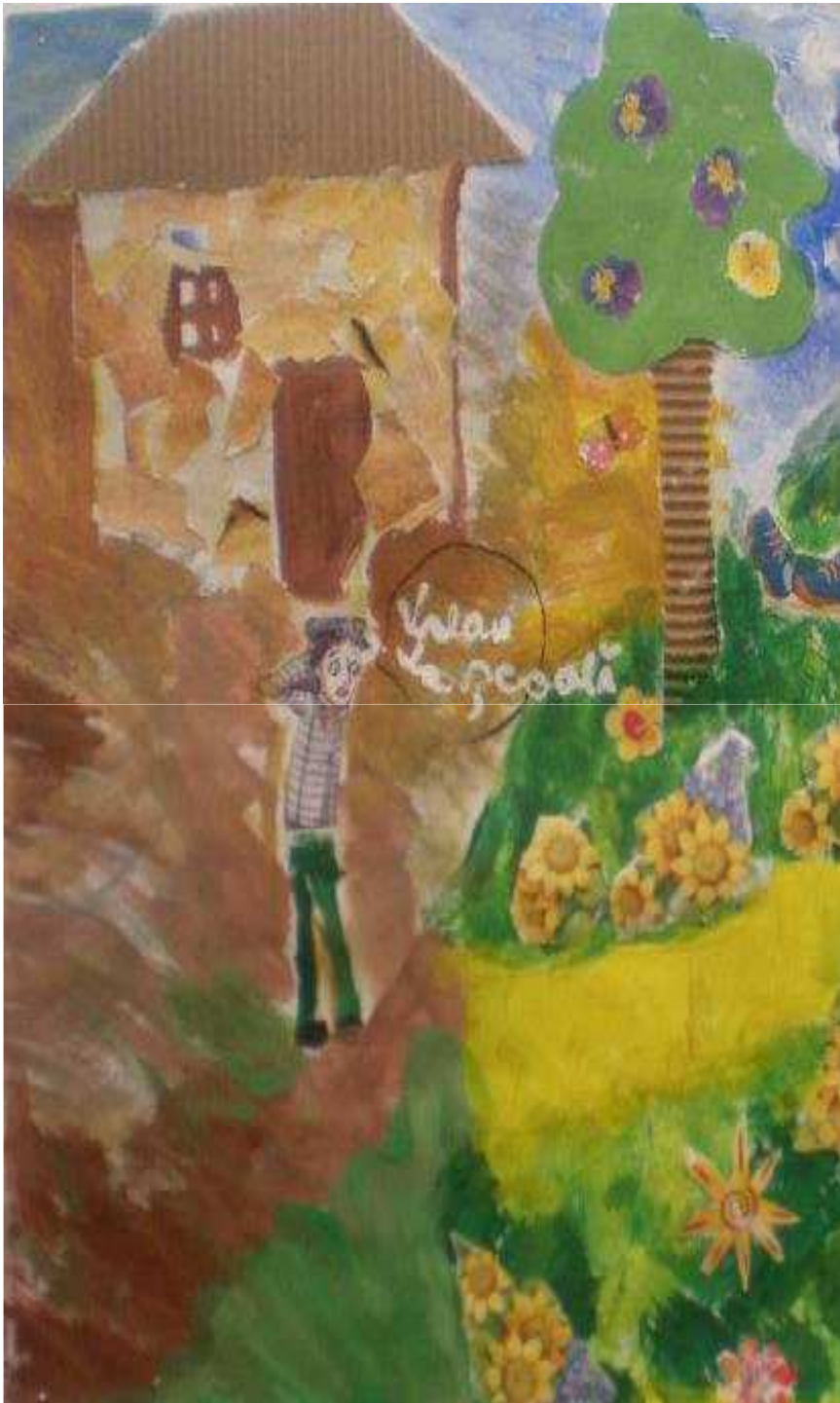
RESULTS AND IMPACT SO FAR

2/2

School actors:

- teachers
- managers
- support staff
- mediators





LESSONS LEARNED...

- Developing communities
- Measuring drop-out and absenteeism
- Managerial views
- Proactive vs reactive interventions
- School and local development
- (Re)Creating partnerships



AND A LOOK IN THE FUTURE

- Priority interventions
- Keeping the momentum
- Beyond physical resources
- Policy learning

THANK YOU!

QUESTIONS?

E-mail: cipf@ise.ro

